



R44 ILLUSTRATED PARTS CATALOG RTR 460 VOLUME II

Production Certificate Number 424WE

Type Certificate Number H11NM



Robinson Helicopter Company
2901 Airport Drive
Torrance, California 90505-6115
United States of America

Phone: (310) 539-0508
Fax: (310) 539-5198
Web: <https://robinsonheli.com>

OFFICE HOURS

Monday through Friday, 6:00 a.m. to 6:00 p.m., Pacific Time.

CUSTOMER SUPPORT AND SPARES ORDERS

Please visit our website <https://robinsonheli.com/support> for the latest customer support contact information. You can also find a map of our global dealers and service centers that will be able to assist at <https://robinsonheli.com/dealers-and-service-centers>.

PUBLICATIONS

Viewing RHC Maintenance Manuals (MMs) and Illustrated Parts Catalogs (IPCs) online at <https://robinsonheli.com/publications> is recommended to ensure use of current data. Viewing MMs and IPCs offline via paper or digital download requires verification that the data is current. Refer to the online MM or IPC Revision Log for the list of current pages.

SUBSCRIPTION ORDER AND RENEWAL FORMS

Subscription order and renewal forms are located at <https://robinsonheli.com>.

WARRANTY INFORMATION

Helicopter and parts warranty information is located at <https://robinsonheli.com>.

TRADEMARK ACKNOWLEDGMENTS

All trademarks and registered trademarks are the property of their respective owners. Reference to any specific commercial products, process, or service by trade name, trademark, or manufacturer does not necessarily constitute or imply its endorsement.

NOTE

Failure to include the ® or ™ symbols or to capitalize specific brand names within the body of this manual does not constitute a waiver of the trademark rights by the respective owners.

- CherryMAX® is a registered trademark of Cherry Aerospace.
- Heli-Coil® is a registered trademark of Böllhoff Group.
- Loctite®, Alodine®, and BONDERITE® are registered trademarks of Henkel AG & Co. KGaA.
- LPS® is a registered trademark of ITW Pro Brands.
- Molykote® is a registered trademark of DuPont Specialty Products USA, LLC.
- Palnut® is a registered trademark of A. Raymond Tinnerman.
- Scotch-Brite™ is a trademark of 3M Company.
- Teflon™ is a trademark of The Chemours Company FC, LLC.
- Ty-Rap® is a registered trademark of ABB Installation Products.

PART INTERCHANGEABILITY

The following parts are interchangeable. Unless noted otherwise, whenever one part is referred to in this catalog, its substitute part is also permitted.

<u>PART:</u>	<u>INTERCHANGEABLE WITH:</u>
110-__ Telatemp	F110-__ Telatemp
22K1-048 Cap nut	B340-10 Cap nut
22K1-82 Cap nut	B340-4 Cap nut
354601 Fuse block	D262-1 Fuse block
354602 Fuse block	D262-2 Fuse block
4509 & Q4509 Lamp	B196-26 Lamp
4591 Lamp	B196-27 Lamp
511TS1-3 Switch	B300-4 Switch
94830A030 Nut	21FKF-518 Nut
AN_ and MS_ part	AS_ part or A880 part numbers
AN340 Nut	MS35649 Nut per NASM35649 except AN340B8 Nut
AN340B8 Nut	B301-8 Nut
AN345 Nut	MS35650 Nut per NASM35650
AN364 Nut	MS21083 Nut per NASM21083
AN507 Screw	MS24693 Screw per NASM24693
AN509 Screw	MS24694 Screw per NASM24694
AN515 Screw	MS35206 Screw per NASM35206
AN515C Screw	MS51957 Screw
AN515UB6R6 Screw	B567-25 Screw
AN515UB6R10 Screw	B567-28 Screw
AN515UB8R10 Screw	B567-43 Screw
AN515UB8R12 Screw	B567-44 Screw
AN515UB8R20 Screw	MS35214-47 Screw per NASM35214
AN525 & AN526 Screw	MS27039C Screw per NASM27039, or B526-6 or -8 Screw and B527-08 Washer per R44 MM § 16-61. Except where noted.
AN814 & MS24391 Plug	AS5169 Plug
AN815 & MS24392 Union	AS5174 Union
AN818-__ D Nut	AN818-__ W Nut
AN819 & MS20819 Sleeve	AS5176 Sleeve
AN822 & MS20822 Elbow	AS5195 Elbow
AN823 & MS20823 Elbow	AS5196 Elbow
AN825 & MS20825 Tee	AS5197 Tee
AN826 & MS20826 Tee	AS5198 Tee
AN894 & MS24398 Bushing	AS5173 Bushing
AN900 Gasket	MS35769 Gasket per AS35769
AN924 & MS24400 Nut	AS5178 Nut
AN931 Grommet	MS35489 Grommet
AN935 Lockwasher	B332-__ Lockwasher, dash number per MS35338
AN936 Lockwasher	MS35335 Lockwasher
AN960-4L Washer	NAS1149FN416P Washer
AN960-4 Washer	NAS1149FN432P Washer
AN960-6L Washer	NAS1149FN616P Washer
AN960-6 Washer	NAS1149FN632P Washer
AN960-8L Washer	NAS1149FN816P Washer
AN960-8 Washer	NAS1149FN832P Washer

Continues

PART INTERCHANGEABILITY (Cont'd)

<u>PART:</u>	<u>INTERCHANGEABLE WITH:</u>
AN960-10L Washer	NAS1149F0332P Washer
AN960-10 Washer	NAS1149F0363P Washer
AN960-416L Washer	NAS1149F0432P Washer
AN960-416 Washer	NAS1149F0463P Washer
AN960-516L Washer	NAS1149F0532P Washer
AN960-516 Washer	NAS1149F0563P Washer
AN960-616L Washer	NAS1149F0632P Washer
AN960-616 Washer	NAS1149F0663P Washer
AN960-816L Washer	NAS1149F0832P Washer
AN960-816 Washer	NAS1149F0863P Washer
AN960-1016L Washer	NAS1149F1032P Washer
AN960-1016 Washer	NAS1149F1063P Washer
AN960PD8L Washer	NAS1149DN816J Washer
AN960PD416L Washer	NAS1149D0416J Washer
AN960PD516L Washer	NAS1149D0516J Washer
AN960PD616L Washer	NAS1149D0616J Washer
AVDEL 016__ Rivet	B204__ Rivet
B0500-022-S Washer	A478-2 Washer
B1000-035-S Washer	A478-3 Washer
B1000-043-S Washer	A478-4 Washer
B270-6 Sealant	A701-11 Tape
CCR244SS-3-02 Rivet	B204-5 Rivet
MS26574-__ Circuit breaker	B297-__ Circuit breaker, except B297-25 and B297-120
MS3320-20 Circuit breaker	B297-120 Circuit breaker
LW-18959-150-25 Clamp	B444-1 Clamp
LW-18959-163-25 Clamp	B444-2 Clamp
LW-18959-175-25 Clamp	B444-3 Clamp
MS20604ML4W1 Rivet	MS20604M4W1 Rivet per NASM20604
MS21042L3 thru L6 Nut	D210-3 thru -6 Nut*
MS21209__ Insert	MS21209__ L or NAS1130__ Insert
MS21919__ Clamp	AS21919__ Clamp
MS24665 CAD plated steel cotter pin	MS24665 CRES cotter pin per NASM24665
MS27039C080__ Screw	B526-6 or -8 Screw and B527-08 Washer per R44 MM § 16-61. Except where noted.
MS27151-__ Stamped Nut	B330-__ Stamped Nut
NAS1067 Nutplate	MS21086 Nutplate per NASM21086
NAS1068A__ Nutplate	MS21075L__ E Nutplate per NASM21075
NAS1291-04 thru -08 Nut	MS21042 Nut per NASM21042
NAS1291-3 thru -10 Nut	D210-3 thru -10 Nut*
NAS1303 thru NAS1320 Bolt, except 1307 Bolt	NAS6603 thru NAS6620** Bolt, except 6607 Bolt
NAS1919B0__ SO__ Rivet	NAS9301B-__ -0__ Rivet
NAS1921B0__ SO__ Rivet	NAS9302B-__ -0__ Rivet
NAS428-__ -__ Bolt	NAS428-__ A__ Bolt
NAS487 Instrument nut	MS33737 Instrument nut per NASM33737
NAS6605-31 Bolt	B660-2 Bolt
NAS679A__ Nut	NAS1291-__ Nut
NAS679C__ M Nut	NAS1291C__ M Nut

* One-way interchangeability, only D210 nut shall be used for listed sizes.

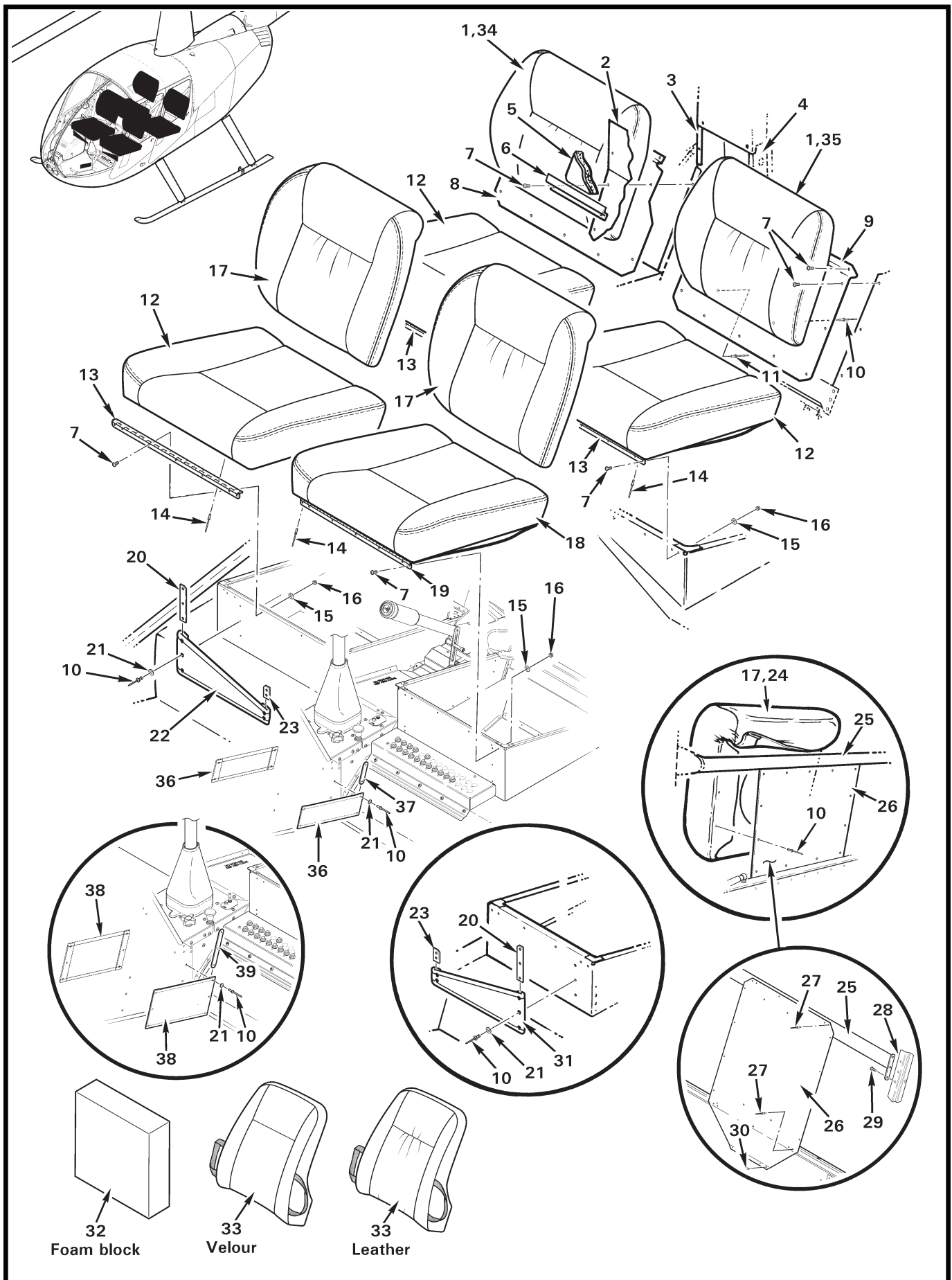
** The following bolts must be NAS1300 series only: NAS1304-17 and NAS1305-35.

Continues

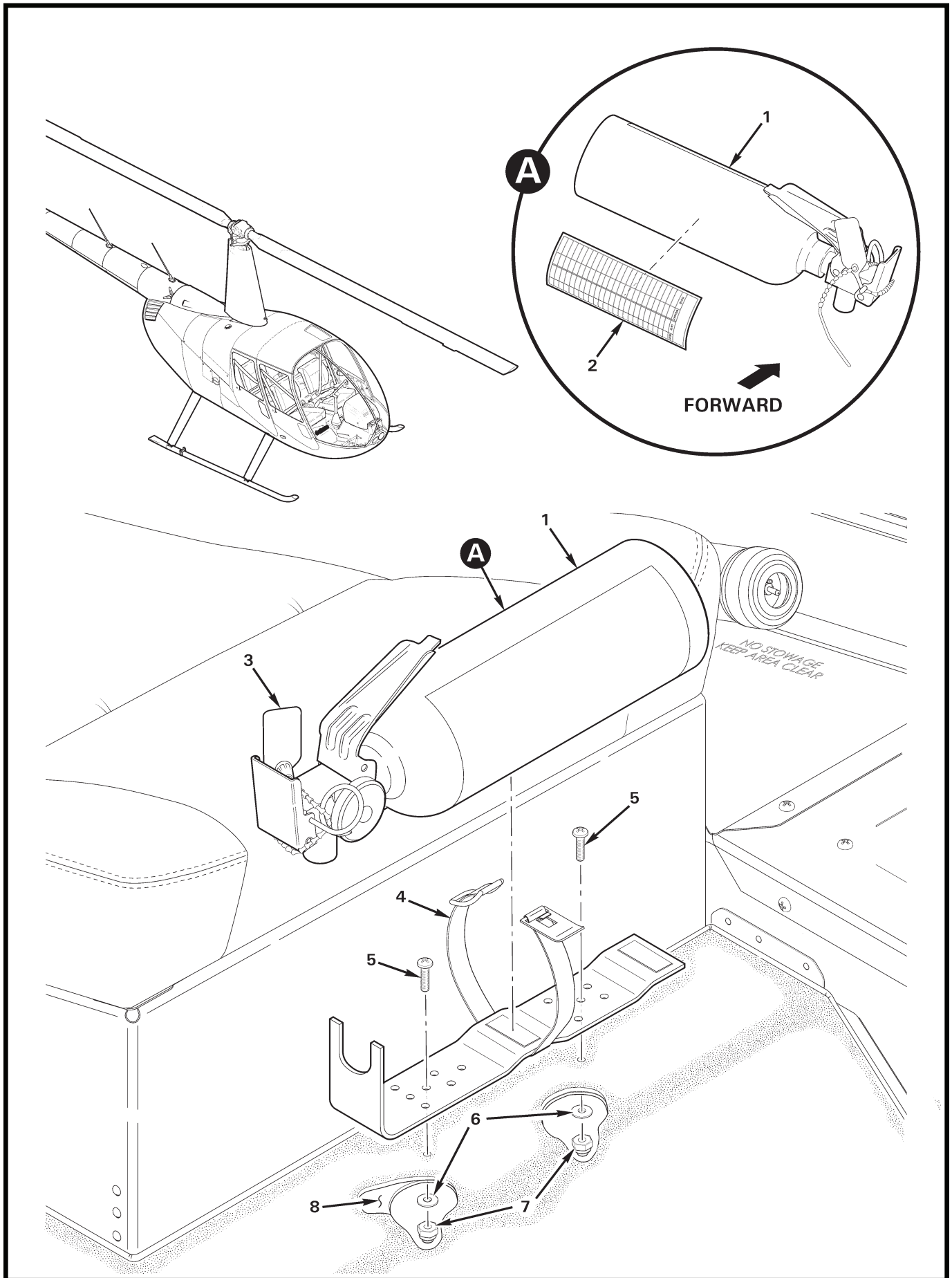
CHAPTER 25

FURNISHINGS

<i>Figure</i>	<i>Title</i>	<i>Page</i>
25-1	Seat Installation	25.0
25-5	Aft Seat Support Installation	25.4
25-9	Heated Seats – Backrest Installation	25.8
25-11	Heated Seats – Seat Cushion Installation	25.10
25-13	Heated Seats – Wiring Installation	25.12
25-17	Seat Belt Installation	25.16
25-19	Seat Belt Installation	25.18
25-21	Five-Point Harness Installation	25.20
25-23	Five-Point Harness Installation	25.22
25-25	Four-Point Harness Installation	25.24
25-27	Four-Point Harness Installation	25.26
25-29	Carpet Installation	25.28
25-33	Headliner and Insulation Installation	25.32
25-35B	Fire Extinguisher (Halotron BrX) Installation – Pilot’s Side	25.35A
25-37	Fire Extinguisher (Halon) Installation – Co-Pilot’s Side, Outboard	25.36
25-39	Fire Extinguisher (Halon) Installation – Co-Pilot’s Side, Inboard	25.38
25-41	Fire Extinguisher (Halon) Installation – Console-Mounted	25.40
25-41B	Kannad ELT Installation	25.41A
25-45	Pointer ELT and Antenna Installation	25.44
25-49	Guard Assembly Installation	25.48



Intentionally Blank



Page 25.35A FIGURE 25-35B FIRE EXTINGUISHER (HALOTRON BRX) INSTALLATION – JUN 2026
PILOT'S SIDE

FIGURE AND INDEX NUMBER	PART NUMBER	DESCRIPTION	PARTS AVAIL	QTY PER ASSY	
25-35B-1		FIRE EXTINGUISHER (HALOTRON BRX) INSTALLATION – PILOT’S SIDE			
	B381-4	Fire Extinguisher Assembly (includes Halotron BrX M-900 Fire Extinguisher and items 2 & 3)	X	1	
		BrX M-900	Halotron Fire Extinguisher (31-oz. capacity)	O	1
	2	G654-15	Decal – Maintenance Log	X	1
	3	RT-A400-CT	Safety Cable	X	1
	4	B381-5	Bracket	X	1
	5	AN525-10R7	Screw	X	2
	6	NAS1149F0332P	Washer	X	2
	7	B340-8	Nut	X	2
8	C391-6	Cover (ref)			
NOTES					

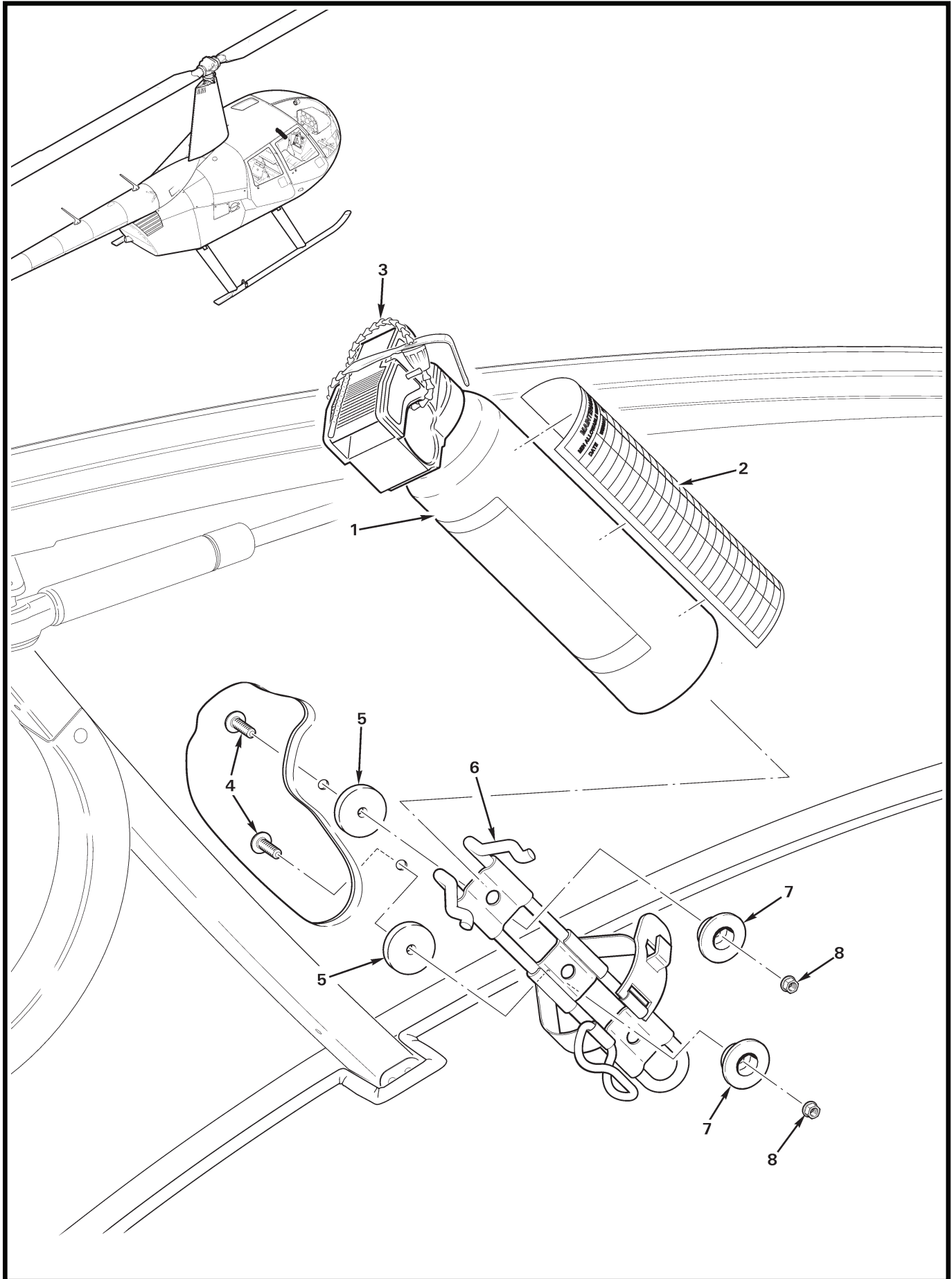


FIGURE AND INDEX NUMBER	PART NUMBER	DESCRIPTION	PARTS AVAIL	QTY PER ASSY
FIRE EXTINGUISHER (HALON) INSTALLATION – CO-PILOT’S SIDE, OUTBOARD				
25-37-1	B381-1	Fire Extinguisher Assembly (includes RT-A400 Fire Extinguisher and items 2 & 3)	X	1
	RT-A400	Fire Extinguisher (14-oz. capacity)	O	1
2	G654-15	Decal – Maintenance Log	X	1
3	RT-A400-CT	Safety Cable	X	1
4	AN526C832R_	Screw (select screw length to provide 0.00–0.06 in. exposed thread)	X	2
5	C130-54	Spacer	X	2
6	B381-3	Bracket	X	1
7	G220-1	Retainer	X	2
8	MS21042L08	Nut	X	2

NOTES

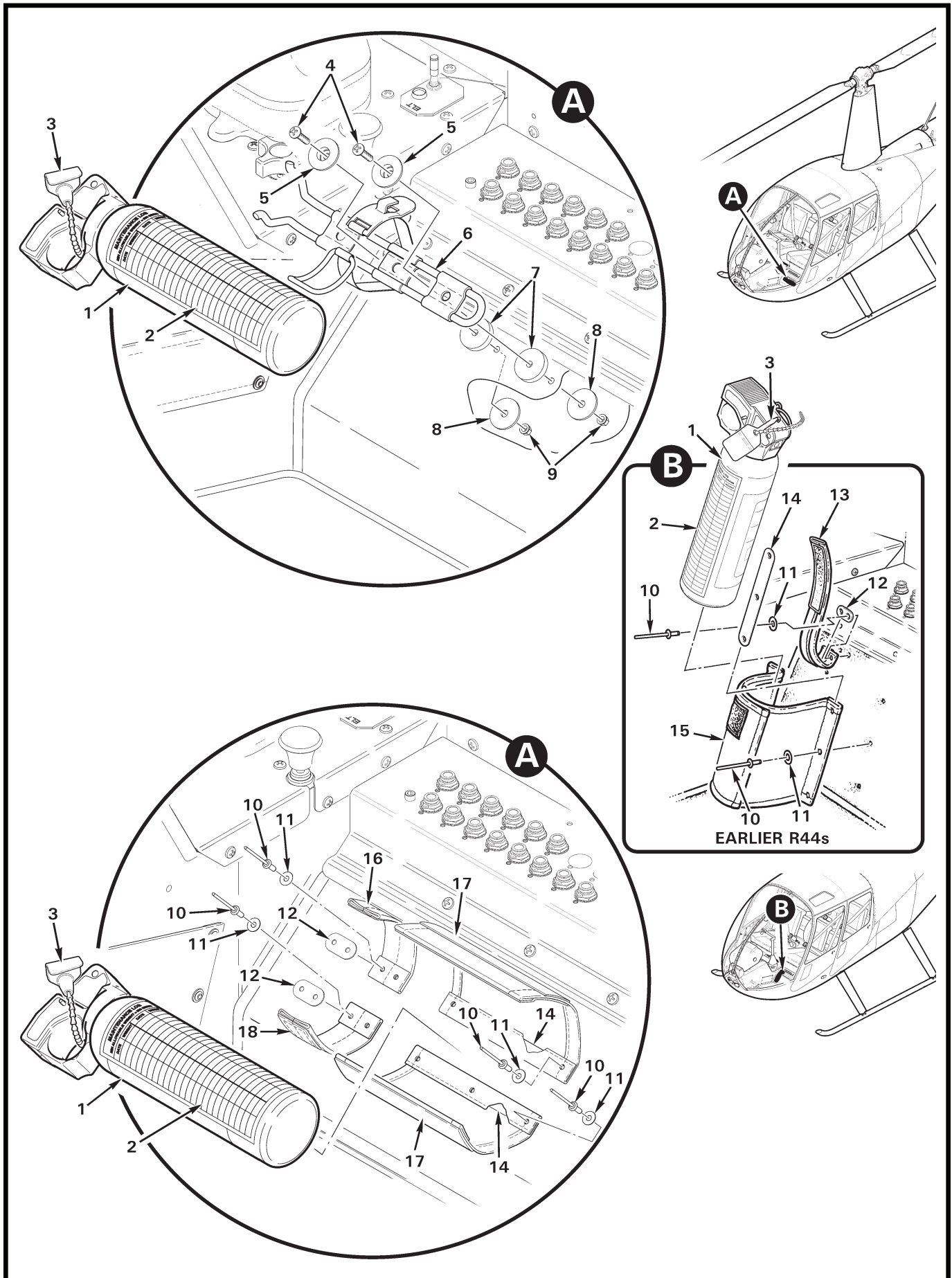


FIGURE AND INDEX NUMBER	PART NUMBER	DESCRIPTION	PARTS AVAIL	QTY PER ASSY
		FIRE EXTINGUISHER (HALON) INSTALLATION – CO-PILOT’S SIDE, INBOARD		
25-39-1	B381-1	Fire Extinguisher Assembly (includes RT-A400 Fire Extinguisher and items 2 & 3)	X	1
	RT-A400	Fire Extinguisher (14-oz. capacity)	O	1
2	G654-15	Decal – Maintenance Log	X	1
3	RT-A400-CT	Safety Cable	X	1
4	MS27039C0810	Screw	X	2
5	G220-1	Retainer	X	2
6	B381-3	Bracket	X	1
7	C130-54	Spacer	X	2
8	AN970-3	Washer	X	2
9	MS21042L08	Nut	X	2
10	B204-3*	Rivet	X	10
11	NAS1149FN616P*	Washer	X	10
12	A913-2*	Strip	X	2
13	B219-4*	Strap Assembly	O	1
14	A913-1*	Strip	X	2
15	B219-3*	Pocket Assembly (2-piece hook and loop)	O	1
16	B219-6*	Strap Assembly (loop)	O	1
17	B219-5*	Pocket Assembly (2-piece hook and loop)	O	1
18	B219-7*	Strap Assembly (hook)	O	1

NOTES * Earlier R44s.

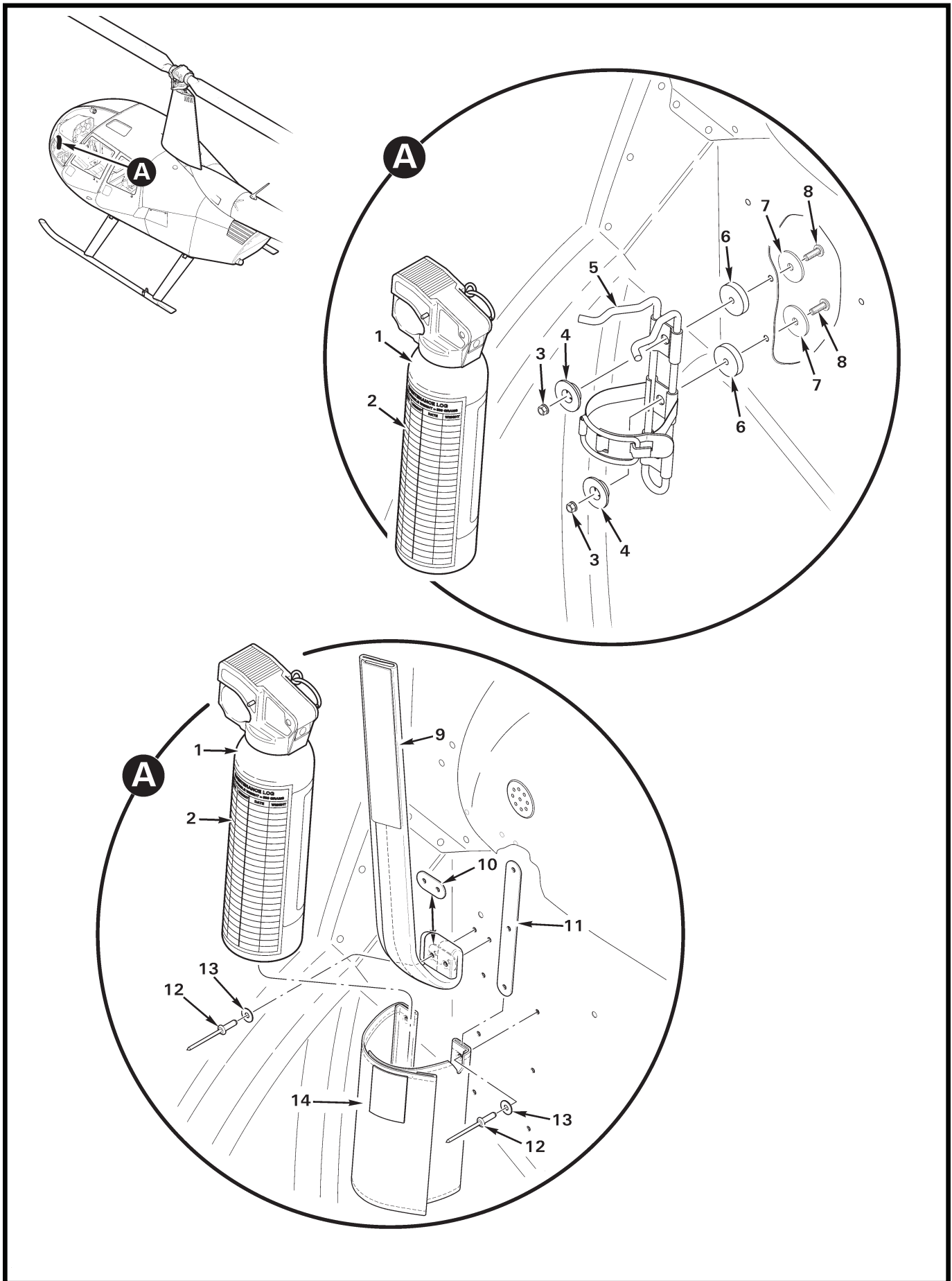
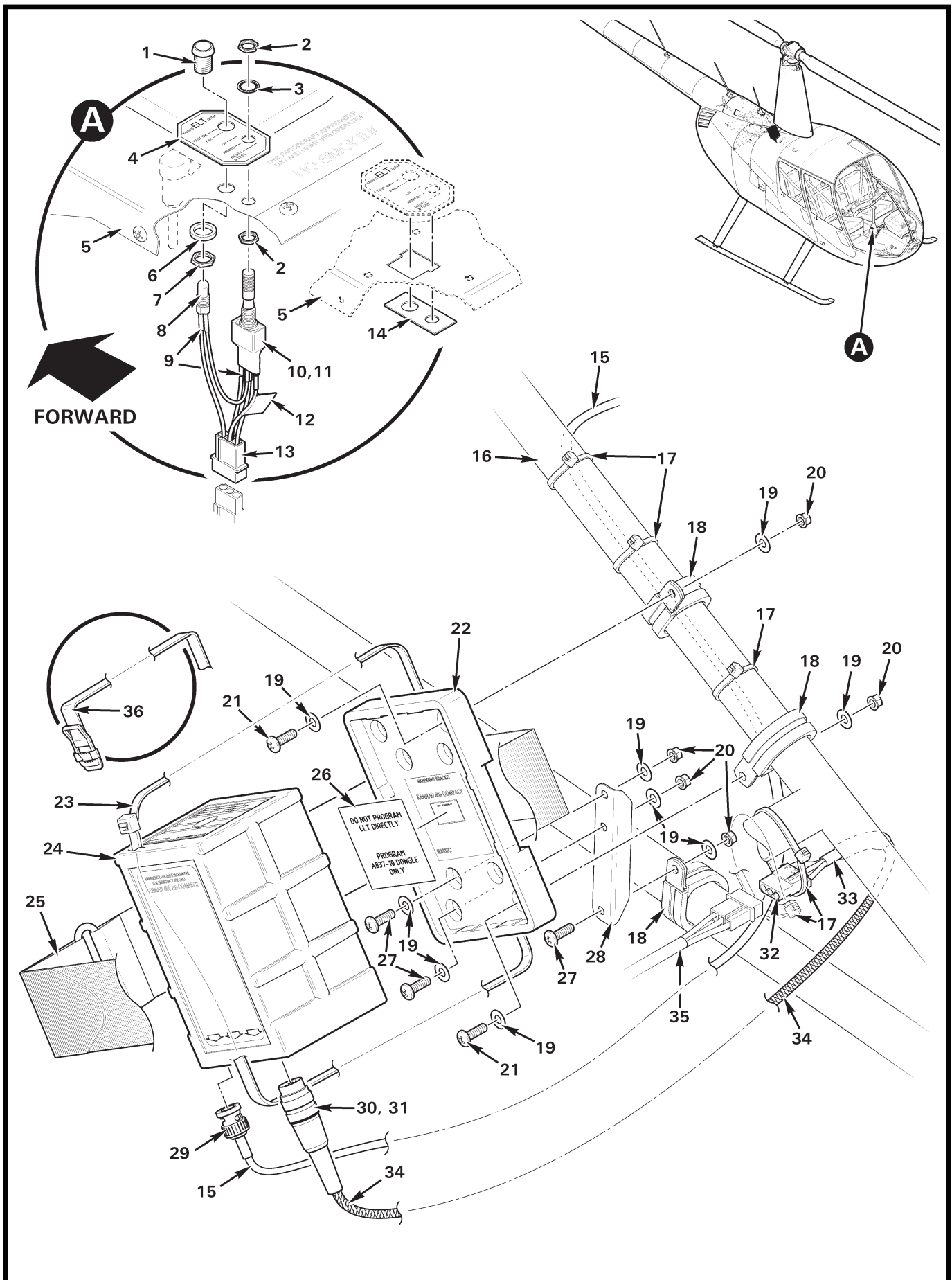


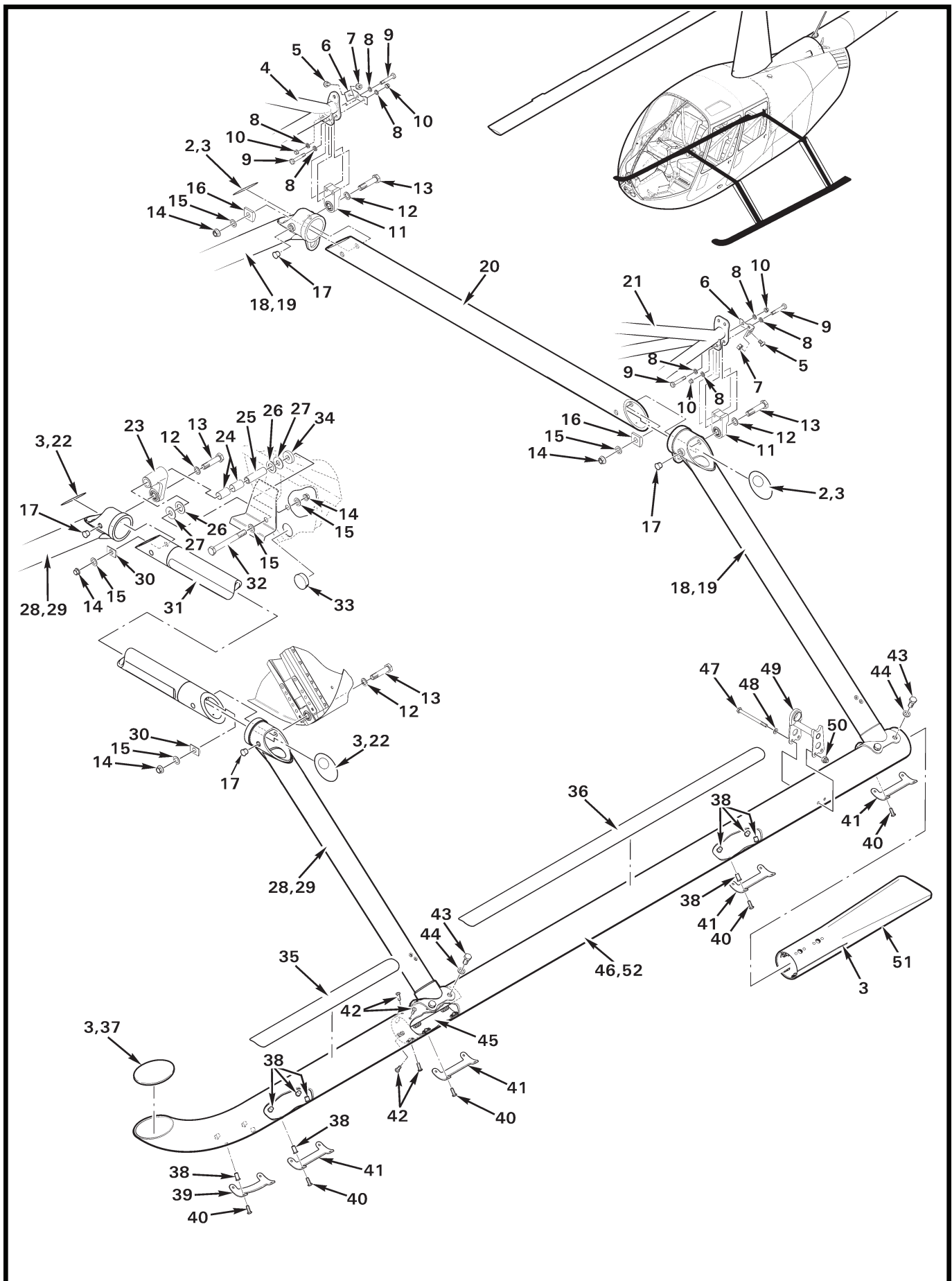
FIGURE AND INDEX NUMBER	PART NUMBER	DESCRIPTION	PARTS AVAIL	QTY PER ASSY	
25-41-1	B381-1	FIRE EXTINGUISHER (HALON) INSTALLATION – CONSOLE-MOUNTED*			
		Fire Extinguisher Assembly (Ref; includes RT-A400 Fire Extinguisher and item 2)			
		RT-A400			Fire Extinguisher (Ref; 14-oz. capacity)
	2	G654-15			Decal – Maintenance Log (Ref)
	3	MS21042L08			Nut (Ref)
	4	G220-1			Retainer (Ref)
	5	B381-3			Bracket (Ref)
	6	C130-54			Spacer (Ref)
	7	AN970-3			Washer (Ref)
	8	MS27039C0810			Screw (Ref)
	9	B219-4			Strap Assembly (Ref)
	10	A913-2			Strip (Ref)
	11	A913-1			Strip (Ref)
	12	B204-2			Rivet (Ref)
13	NAS1149FN616P	Washer (Ref)			
14	B219-3	Pocket Assembly (Ref)			
NOTES	* Fire extinguisher removed from console-mounted location per R44 Service Bulletin SB-107 current revision. Order KI-281-2 to relocate fire extinguisher to co-pilot’s side, inboard or outboard location, as desired.				



CHAPTER 32

LANDING GEAR

<i>Figure</i>	<i>Title</i>	<i>Page</i>
32-1	Landing Gear Assembly	32.0
32-5	Landing Gear Assembly	32.4
32-9	Strut Fairing Installation	32.8
32-11	Strut Fairing Installation	32.10
32-11B	Landing Gear Lug – Extension Installation	32.11
32-13	Pop-Out Floats – Cylinder Assembly Installation	32.12
32-15	Pop-Out Floats – Cylinder Assembly Installation	32.14
32-17	Pop-Out Floats – Lever Assembly	32.16
32-19	Pop-Out Floats – Tube Assemblies Installation	32.18
32-23	Pop-Out Floats – Tube Assembly Components	32.22
32-25	Pop-Out Floats – Tube Assembly Components	32.24
32-27	Pop-Out Floats – Hoses Installation	32.26
32-29	Fixed Floats – Tube Assemblies Installation	32.28
32-33	Fixed Floats – Components	32.32
32-37	Skid Step Installation (Small)	32.36
32-39	Skid Step Installation (Long)	32.37



Intentionally Blank

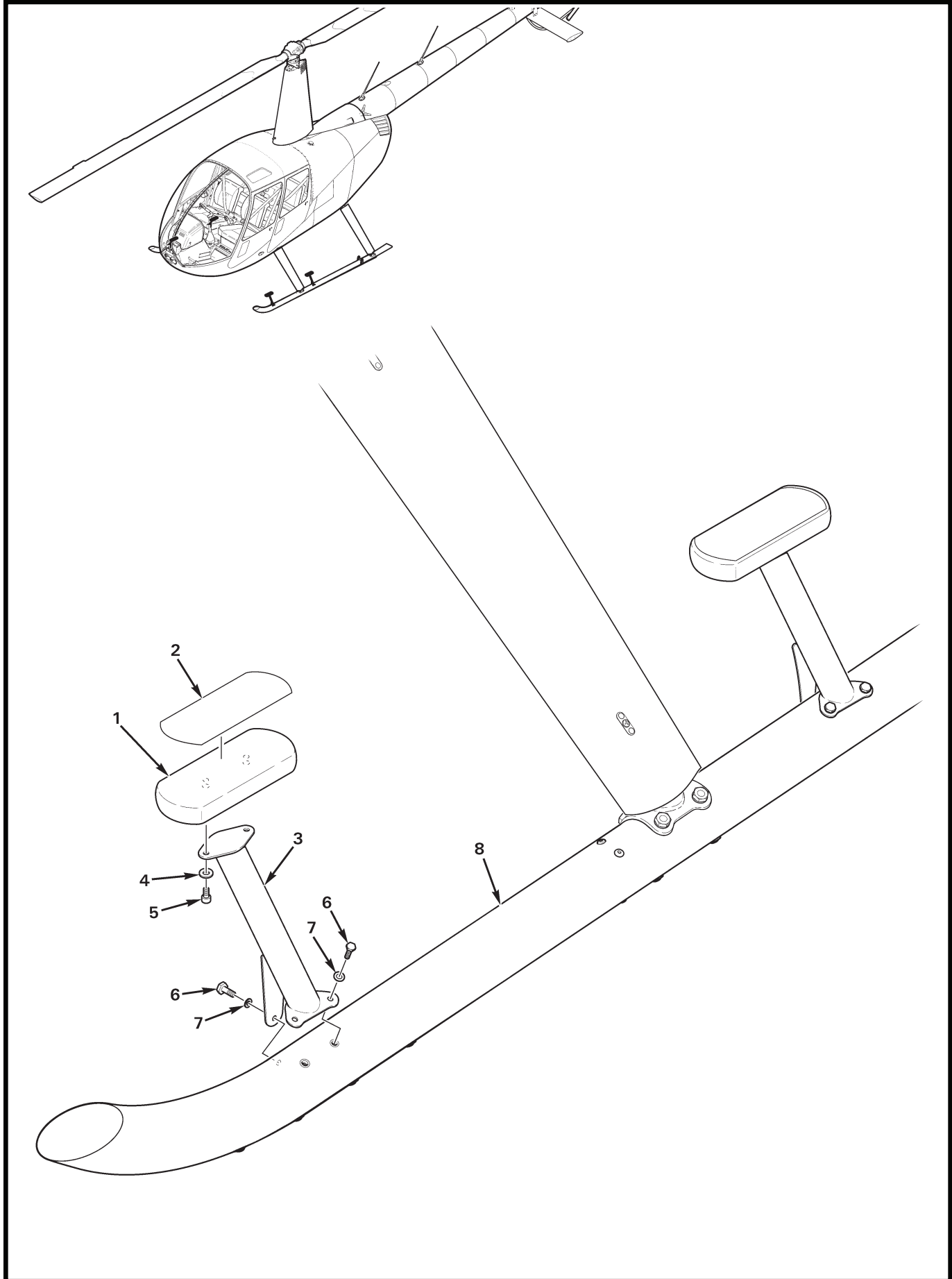


FIGURE AND INDEX NUMBER	PART NUMBER	DESCRIPTION	PARTS AVAIL	QTY PER ASSY
SKID STEP INSTALLATION (SMALL)*				
32-37-1	F781-1	Step Assembly (Incl item 2; RH and LH, FWD and AFT)	X	4
2	A751-8	Strip	X	1
3	F780-2	Support Weldment (RH and LH, FWD and AFT)	X	1
4	NAS1149F0363P	Washer	X	2
5	NAS1351-3-8P	Screw	X	2
6	NAS6603-3	Bolt	X	3
7	NAS1149F0332P	Washer	X	3
8	C242-7	Skid Tube Assembly (LH)	O	1
	C242-9**	Skid Tube Assembly (LH, includes C242-7 and is painted) . .	X	1
	C242-8	Skid Tube Assembly (RH)	O	1
	C242-10**	Skid Tube Assembly (RH, includes C242-8 and is painted) . .	X	1

NOTES * Optional equipment; cannot be installed with floats. Flight with one or more step assemblies and mounting hardware removed is permissible; quantities shown are for one step assembly.
 ** Revision O and subsequent Skid Tube Assemblies include provisions for Skid Step installation.

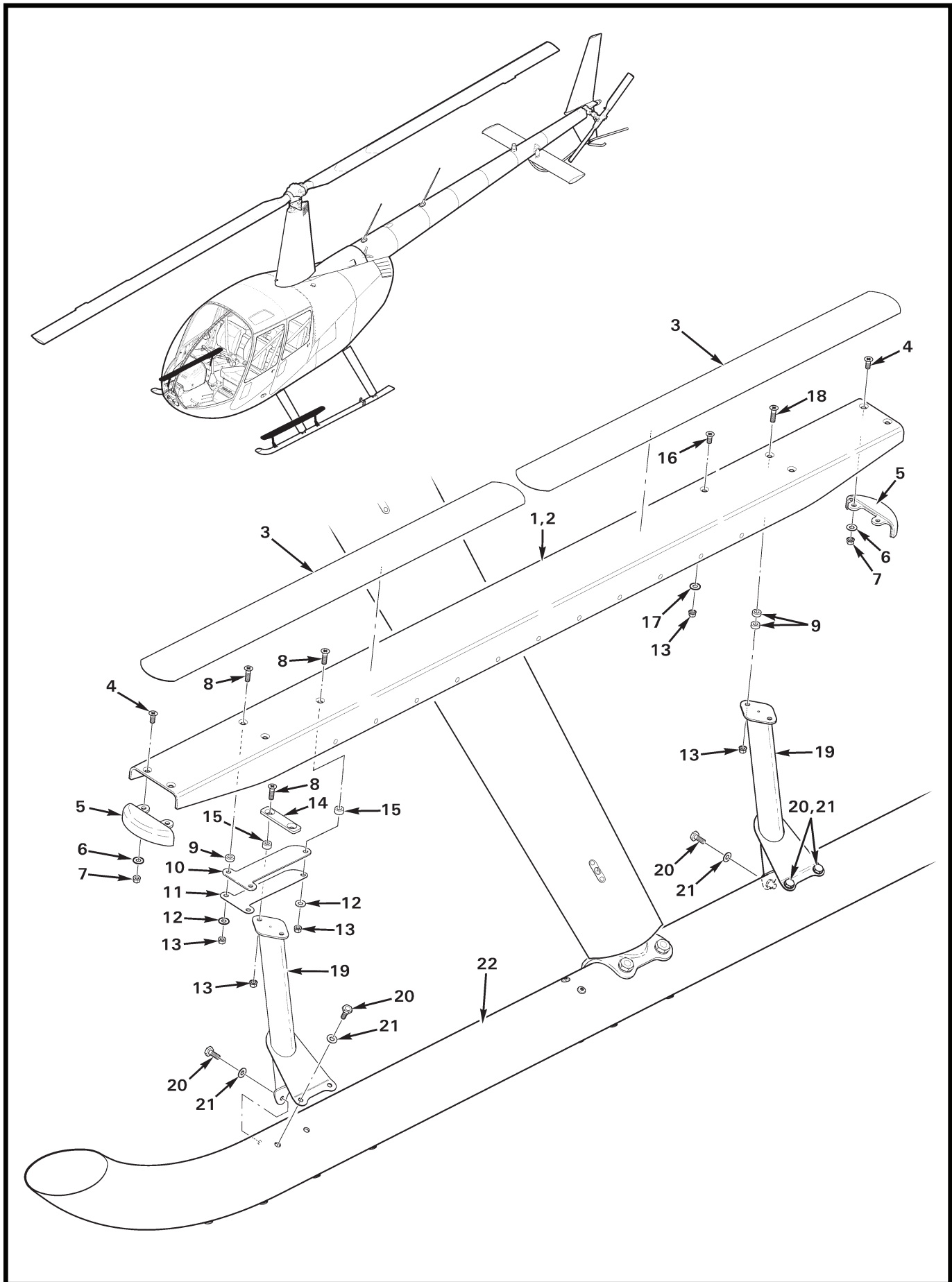


FIGURE AND INDEX NUMBER	PART NUMBER	DESCRIPTION	PARTS AVAIL	QTY PER ASSY
SKID STEP INSTALLATION (LONG)*				
32-39-1	F782-5	Step Assembly – LH (Incl items 2, 3, and 8 thru 19; install with sliders in FWD location)	X	1
	F782-6	Step Assembly – RH (Incl items 2, 3, and 8 thru 19; install with sliders in FWD location; not shown.)	X	1
	2 F782-4	Step Assembly (LH or RH; includes items 4 thru 7)	X	1
	3 A751-10	Strip (self-adhesive)	X	2
	4 MS24694-S49	Screw	X	4
	5 F783-4	Cap	X	2
	6 NAS1149F0332P	Washer	X	4
	7 D210-3	Nut	X	4
	8 MS24694-S52	Screw	X	5
	9 A130-20	Spacer	X	6
	10 F783-6	Slider, plastic	X	1
	11 F783-3	Slider, metal	X	1
	12 NAS1149F0332P	Washer	X	3
	13 D210-3	Nut	X	8
	14 F783-5	Pad	X	1
	15 A130-21	Spacer	X	3
	16 MS24694-S49	Screw	X	1
	17 NAS1149F0363P	Washer	X	1
	18 MS24694-S53	Screw	X	2
	19 F780-3	Support Weldment (LH or RH)	X	2
	20 NAS6603-3	Bolt	X	6
	21 NAS1149F0332P	Washer	X	6
22 C242-7	Skid Tube Assembly (LH)	O	1	
	C242-9**	Skid Tube Assembly (LH, includes C242-7 and is painted) . .	X	1
	C242-8	Skid Tube Assembly (RH)	O	1
	C242-10**	Skid Tube Assembly (RH, includes C242-8 and is painted) . .	X	1

NOTES * Optional equipment; cannot be installed with floats. Flight with one or more step assemblies and mounting hardware removed is permissible; quantities shown are for one step assembly.
 ** Revision O and subsequent Skid Tube Assemblies include provisions for Skid Step installation.

Intentionally Blank

CHAPTER 67

FLIGHT CONTROLS

<i>Figure</i>	<i>Title</i>	<i>Page</i>
67-9	Forward Cyclic Installation	67.8
67-11	Cyclic Grip Assembly	67.10
67-15B	Cyclic Grip Assembly	67.15A
67-17	Cyclic Friction Assembly	67.16
67-21	Collective Stick Assembly	67.20
67-25	Collective Spring Assembly – Electric Trim	67.24
67-27	Main Rotor Controls	67.26
67-31	Main Rotor Controls	67.30
67-35	Main Rotor Controls	67.34
67-39	Torque Tube Installation	67.38
67-41	Aft Support Assembly.	67.40
67-45	Aft Support Assembly	67.44
67-49	Push-Pull Tube Assemblies	67.48
67-53	Jackshaft Installation	67.52
67-57	Jackshaft Support Weldment Installation	67.56
67-59	Jackshaft Installation	67.58
67-61	C017-6 Swashplate Installation	67.60
67-65	C017-4 Swashplate Installation	67.64
67-69	Swashplate Installation	67.68
67-70C	C258-8 Pitch Link Installation	67.70B
67-71	C258-1 & C258-5 Pitch Link Installation	67.70D
67-73	Swashplate Ball Installation	67.72
67-75	Swashplate Ball Installation	67.74
67-77	Tail Rotor Controls – Pedals Installation	67.76
67-81	Tail Rotor Controls – Pedals Installation	67.80
67-85	Tail Rotor Controls – C317 Bellcrank	67.84
67-89	Tail Rotor Controls – C316 Bellcrank	67.88
67-91	Tail Rotor Controls – C331 Bellcrank	67.90

Intentionally Blank

Intentionally Blank

Intentionally Blank

Intentionally Blank

Intentionally Blank

Intentionally Blank

Intentionally Blank

Intentionally Blank

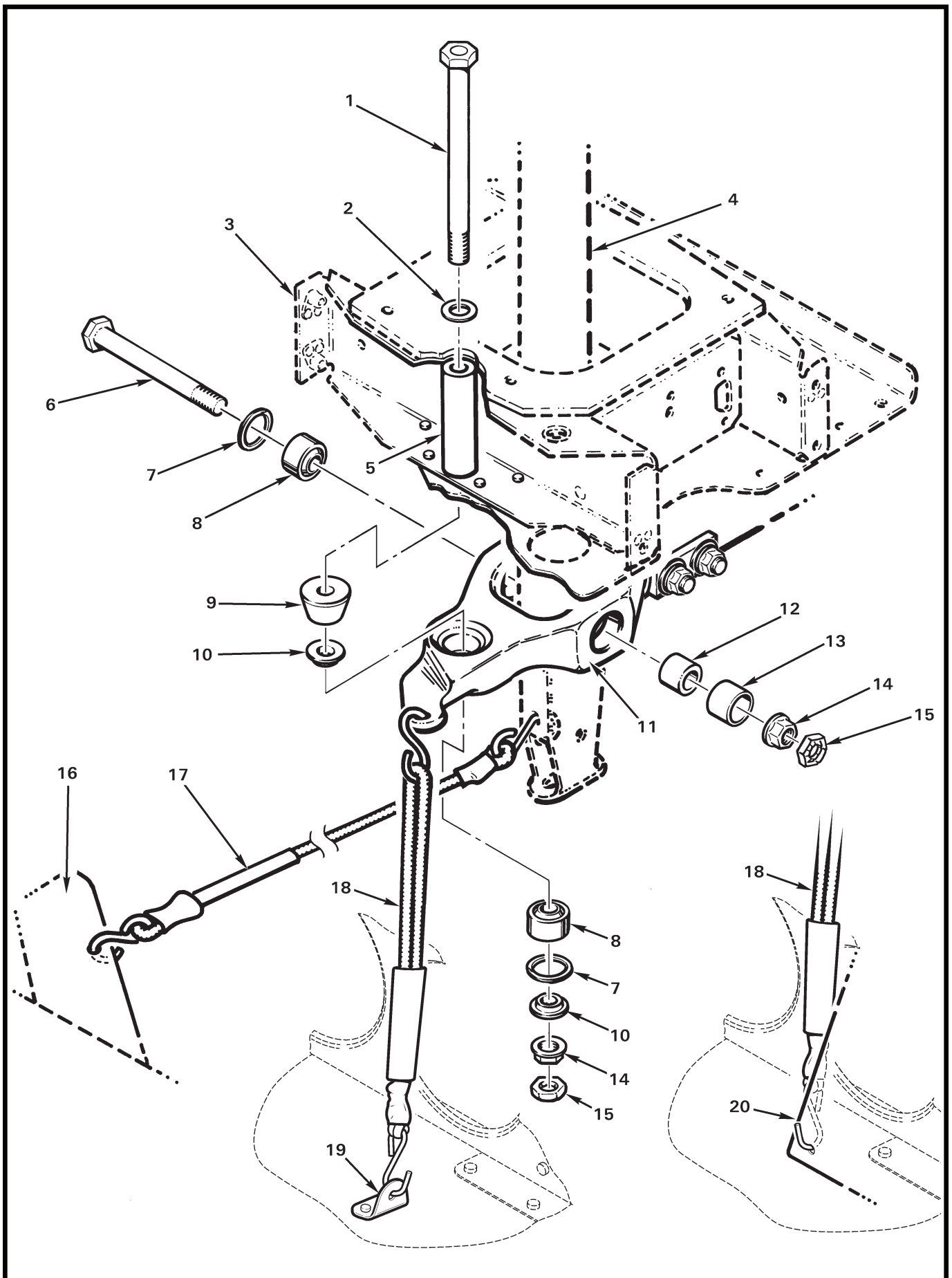


FIGURE AND INDEX NUMBER	PART NUMBER	DESCRIPTION	PARTS AVAIL	QTY PER ASSY
JACKSHAFT INSTALLATION				
67-59-1	C337-1	Jackshaft Assembly	X	1
2	D173-1	Rod End	X	2
3	NAS1149F0532P	Washer	X	3
4	D210-5	Nut	X	4
5	B330-16	Stamped Nut	X	8
6	AN960-516	Washer	X	2
7	C141-1	Washer	X	3
8	NAS6605-25	Bolt	X	2
9	B330-19	Stamped Nut	X	2
10	AN316-6R	Nut	X	2
11	NAS6605-8	Bolt	X	1
12	NAS6605-26	Bolt	X	1
13	C115-1	Spacer	X	1
14	NAS1149F0632P	Washer	X	1
15	C344-1	Tube Weldment	X	2
16	AN316-5R	Nut	X	4
17	A101-4	Rod End	X	4
18	NAS6604-8	Bolt	X	4
19	NAS1149F0432P	Washer	X	8
20	D210-4	Nut	X	4
21	B330-13	Stamped Nut	X	4
22	A650-4*	Fitting (supersedes A650-2)	X	4
23	NAS1149F1063P	Washer	X	3
24	C345-1	Strut Weldment	X	1
25	C130-21	Spacer	X	2
26	A267-1	Washer (Ref)		
27	C121-3	Push-Pull Tube Assembly (Ref)		
28	C121-5	Push-Pull Tube Assembly (Ref)		

NOTES * Refer to Figure 63-1 for nut.

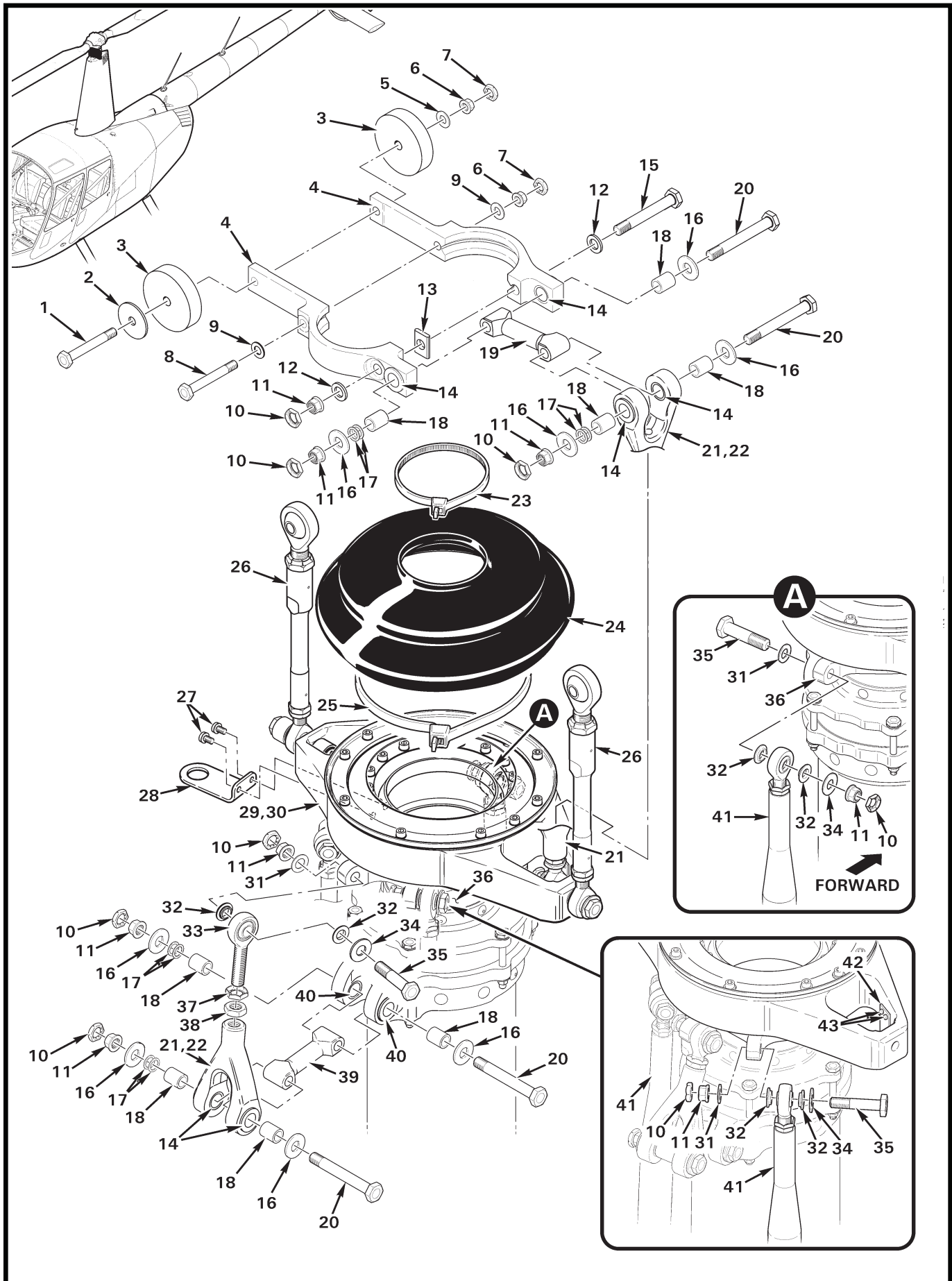


FIGURE AND INDEX NUMBER	PART NUMBER	DESCRIPTION	PARTS AVAIL	QTY PER ASSY
C017-6 SWASHPLATE INSTALLATION				
67-61-1	NAS6604-24	Bolt (Select bolt length which, after correct torque is applied, exposes 2 to 4 threads beyond nut.)	X	1
2	AN970-4*	Washer (A/R for balance)	X	A/R
3	A255-1*	Counter Weight (1.10 in. O.D.)	X	A/R
	A255-2*	Counter Weight (1.90 in. O.D.)	X	A/R
4	C203-5	Yoke Assembly (includes item 14[1])	X	2
5	NAS1149F0432P	Washer (or NAS1149F0463P as required for proper thread engagement)	X	A/R
6	D210-4	Nut	X	2
7	B330-13	Stamped Nut	X	2
8	NAS6604-24	Bolt	X	1
9	NAS1149F0432P	Washer	X	2
10	B330-16	Stamped Nut	X	9
11	D210-5	Nut	X	9
12	NAS1149F0563P	Washer	X	2
13	A210-1	Key	X	1
14	C648-2	Bearing – Journal (install wet; see R44 MM § 23-75 for approved primer)	X	6
15	NAS6605-28	Bolt	X	1
16	C141-19	Washer	X	8
17	C117-67	Shim (thickness = 0.016 in.)	X	A/R
	C117-68	Shim (thickness = 0.020 in.)	X	A/R
	C117-69	Shim (thickness = 0.025 in.)	X	A/R
18	C105-6	Journal	X	8
19	C204-3	Arm (upper; 2.870 inches long)	X	1
20	NAS6605-31	Bolt	X	4
21	A205-7	Fork Assembly (Includes item 14 [2]; see Figure 67-70C or 67-71.)	X	2
22	B270-13	Sealant (to fill cavity in item 21)	X	A/R
23	MS3367-7-0	Ty-Rap	X	1
24	C480-1	Boot	X	1
25	MS3367-6-0	Ty-Rap	X	1
26	C258-8**	Pitch Link Assembly (Ref)		
27	NAS1352N08-4	Screw	X	2
28	B769-2	Bracket	X	1

NOTES * For main rotor balance adjustment, refer to R44 MM § 10.231 Part C.
 ** C258-8 shown; see Figure 67-70C. C258-5 & -1 not shown; see Figure 67-71.

Continues

FIGURE AND INDEX NUMBER	PART NUMBER	DESCRIPTION	PARTS AVAIL	QTY PER ASSY
C017-6 SWASHPLATE INSTALLATION (Cont'd)				
67-61-29	C017-6	Swashplate Assembly (Incl items 27, 28, 30, 36, 42, 43, and 44)	X	1
	C017-6R	C017-6 Swashplate Assembly (Overhaul exchange; requires core deposit.)	X	1
30	C199-2	Swashplate Assembly – Upper (Ref)		
31	NAS1149F0532P	Washer	X	4
32	C115-1	Spacer	X	8
33	D173-3	Rod End	X	1
	D173-2	Rod End (earlier R44s; superseded by D173-3)	X	1
34	C141-1	Washer	X	4
35	NAS6605-17	Bolt	X	4
36	F198-1	Swashplate Assembly – Lower (Ref)		
37	B330-19	Stamped Nut	X	1
38	AN316-6R	Nut	X	1
39	C204-2	Arm – Lower (2.520 inches long)	X	1
40	C648-2	Bearing (Ref)		
41	C121-31	Push-Pull Tube Assembly (Ref; see Figure 67-49.)		
42	C769-2	Interrupter	X	1
43	MS20470AD3	Rivet	X	2
44	C647-12	Bearing Set (life-limited component, see MM § 3.100; not shown)	O	1

45	KI-6604	R44-series & R66 C017-5 Swashplate Installation Parts Kit Instructions (Contains parts to install C017-6 swashplate assembly and supersedes R7983 kit. Does not include swashplate or C284 tube assembly.)	X	A/R

NOTES

Intentionally Blank

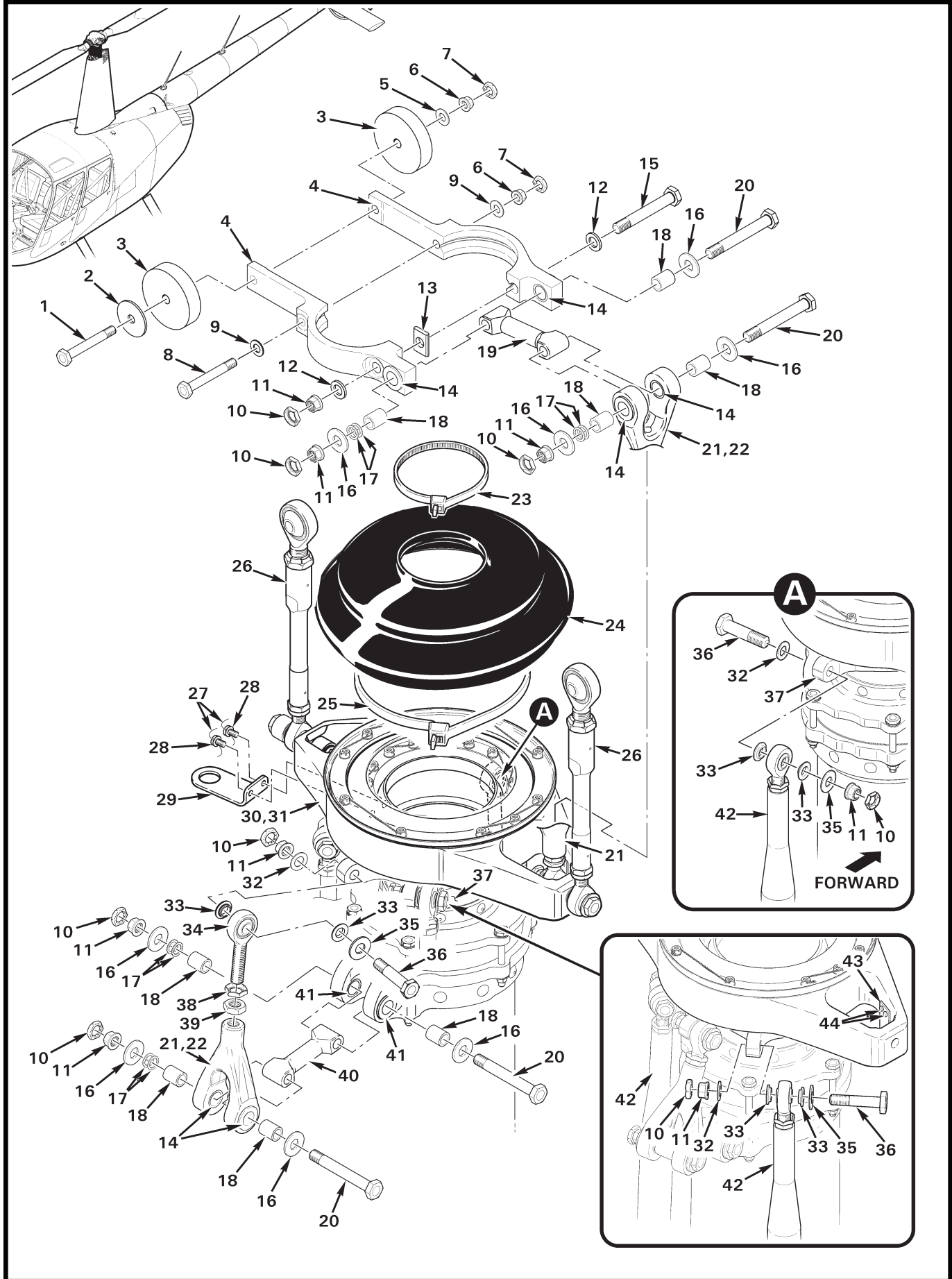


FIGURE AND INDEX NUMBER	PART NUMBER	DESCRIPTION	PARTS AVAIL	QTY PER ASSY
C017-4 SWASHPLATE INSTALLATION*				
67-65-1	NAS6604-24	Bolt (Select bolt length which, after correct torque is applied, exposes 2 to 4 threads beyond nut.)	X	1
2	AN970-4**	Washer (A/R for balance)	X	A/R
3	A255-1**	Counter Weight (1.10 in. O.D.)	X	A/R
	A255-2**	Counter Weight (1.90 in. O.D.)	X	A/R
4	C203-5	Yoke Assembly (includes item 14[1])	X	2
5	NAS1149F0432P	Washer (or NAS1149F0463P as required for correct nut engagement)	X	A/R
6	D210-4	Nut	X	2
7	B330-13	Stamped Nut	X	2
8	NAS6604-24	Bolt	X	1
9	NAS1149F0432P	Washer	X	2
10	B330-16	Stamped Nut	X	9
11	D210-5	Nut	X	9
12	NAS1149F0563P	Washer	X	2
13	A210-1	Key	X	1
14	C648-2	Bearing – Journal (Install wet; see R44 MM § 23-75 for approved primer.)	X	6
15	NAS6605-28	Bolt	X	1
16	C141-19	Washer	X	8
17	C117-67	Shim (thickness = 0.016 in.)	X	A/R
	C117-68	Shim (thickness = 0.020 in.)	X	A/R
	C117-69	Shim (thickness = 0.025 in.)	X	A/R
18	C105-6	Journal	X	8
19	C204-3	Arm – Upper (2.870 inches long)	X	1
20	NAS6605-31	Bolt	X	4
21	A205-7	Fork Assembly (Includes item 14 [2]; see Figure 67-70C or 67-71.)	X	2
22	B270-13	Sealant (to fill cavity in item 21)	X	A/R
23	MS3367-7-9	Ty-Rap	X	1
24	C480-1	Boot	X	1
25	MS3367-6-0	Ty-Rap	X	1
26	C258-8***	Pitch Link Assembly (Ref)		
27	MS20995C32	0.032 in. dia. Safety Wire	X	A/R
28	AN503-8-4	Screw	X	2
29	B769-2	Bracket	X	1

NOTES * No longer available. Superseded by C017-6 Swashplate Assembly, see Figure 67-61.
 ** For main rotor balance adjustment, refer to R44 MM § 10.231 Part C.
 *** C258-8 shown; see Figure 67-70C. C258-5 & -1 not shown; see Figure 67-71. Continues

FIGURE AND INDEX NUMBER	PART NUMBER	DESCRIPTION	PARTS AVAIL	QTY PER ASSY
C017-4 SWASHPLATE INSTALLATION* (Cont'd)				
67-65-30	C017-4*	Swashplate Assembly (Ref, includes items 28, 29, 31, 37, 43, 44, and 45.	O	1
31	C199-1	Swashplate Assembly – Upper (Ref)		
32	NAS1149F0532P	Washer	X	4
33	C115-1	Spacer	X	8
34	D173-2	Rod End (superseded by D173-3 Rod End)	X	1
35	C141-1	Washer	X	4
36	NAS6605-20	Bolt	X	4
37	C198-2	Swashplate Assembly – Lower (Ref)		
38	B330-19	Stamped Nut	X	1
39	AN316-6R	Nut	X	1
40	C204-2	Arm – Lower (2.520 inches long)	X	1
41	C648-2	Bearing (Ref)		
42	C121-31	Push-Pull Tube Assembly (Ref; see Figure 67-49.)		
43	C769-2	Interrupter	X	1
44	MS20470AD3	Rivet	X	2
45	C647-12	Bearing Set (life-limited component, see MM § 3.100; not shown)	O	1

NOTES * No longer available. Superseded by C017-6 Swashplate Assembly, see Figure 67-61.

Intentionally Blank

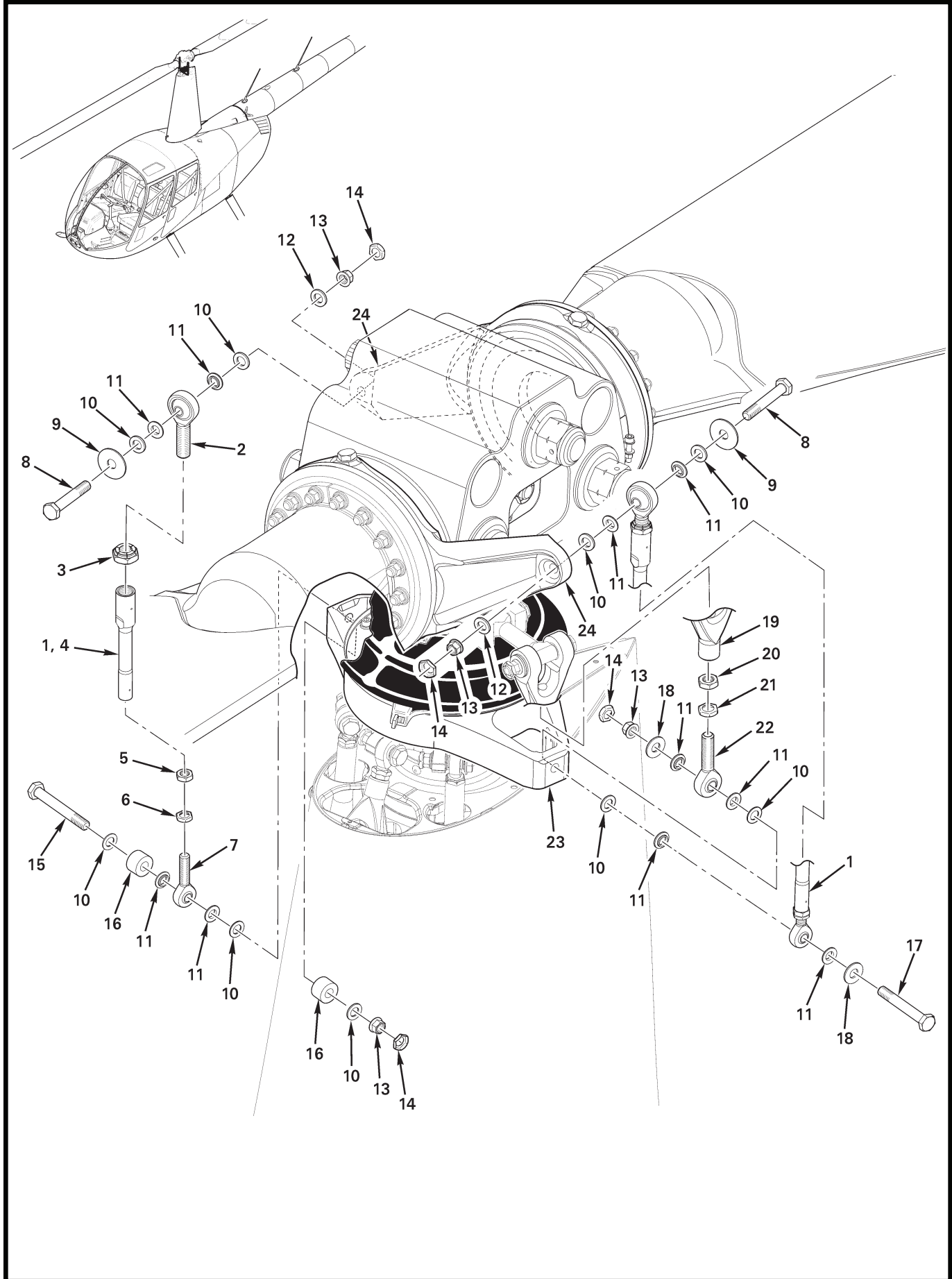


FIGURE AND INDEX NUMBER	PART NUMBER	DESCRIPTION	PARTS AVAIL	QTY PER ASSY
C258-8 PITCH LINK INSTALLATION*				
67-70C-1	C258-8*	Pitch Link Assembly (Incl items 2 thru 7)	X	2
2	D173-6	Rod end	X	2
3	21FKF-813	Nut (Alternate part no. 27FKF-813)	X	2
4	C258-6	Barrel Assembly	X	2
5	AN316-6R	Nut	X	2
6	B330-19	Stamped Nut	X	2
7	D173-3	Rod end	X	2
8	NAS6605-23	Bolt	X	2
9	C141-27	Washer	X	2
10	NAS1149F0532P	Washer	X	9
11	C115-1	Spacer	X	10
12	NAS1149F0563P	Washer	X	2
13	D210-5	Nut	X	4
14	B330-16	Stamped Nut	X	4
15	NAS6605-31	Bolt	X	1
16	A255-3	Counterweight	X	2
17	NAS6605-28	Bolt	X	1
18	C141-1	Washer	X	2
19	A205-7	Fork Assembly (Ref; includes items 20 thru 22)		
20	AN316-6R	Nut	X	1
21	B330-19	Stamped Nut	X	1
22	D173-3	Rod end	X	1
23	C017-6	Swashplate Assembly (Ref)		
	C017-4	Swashplate Assembly (Ref)		
24	C157-3	Pitch Horn (Ref)		

NOTES * Must be installed in pairs; refer to R44 Service Letter SL-95.

Continues

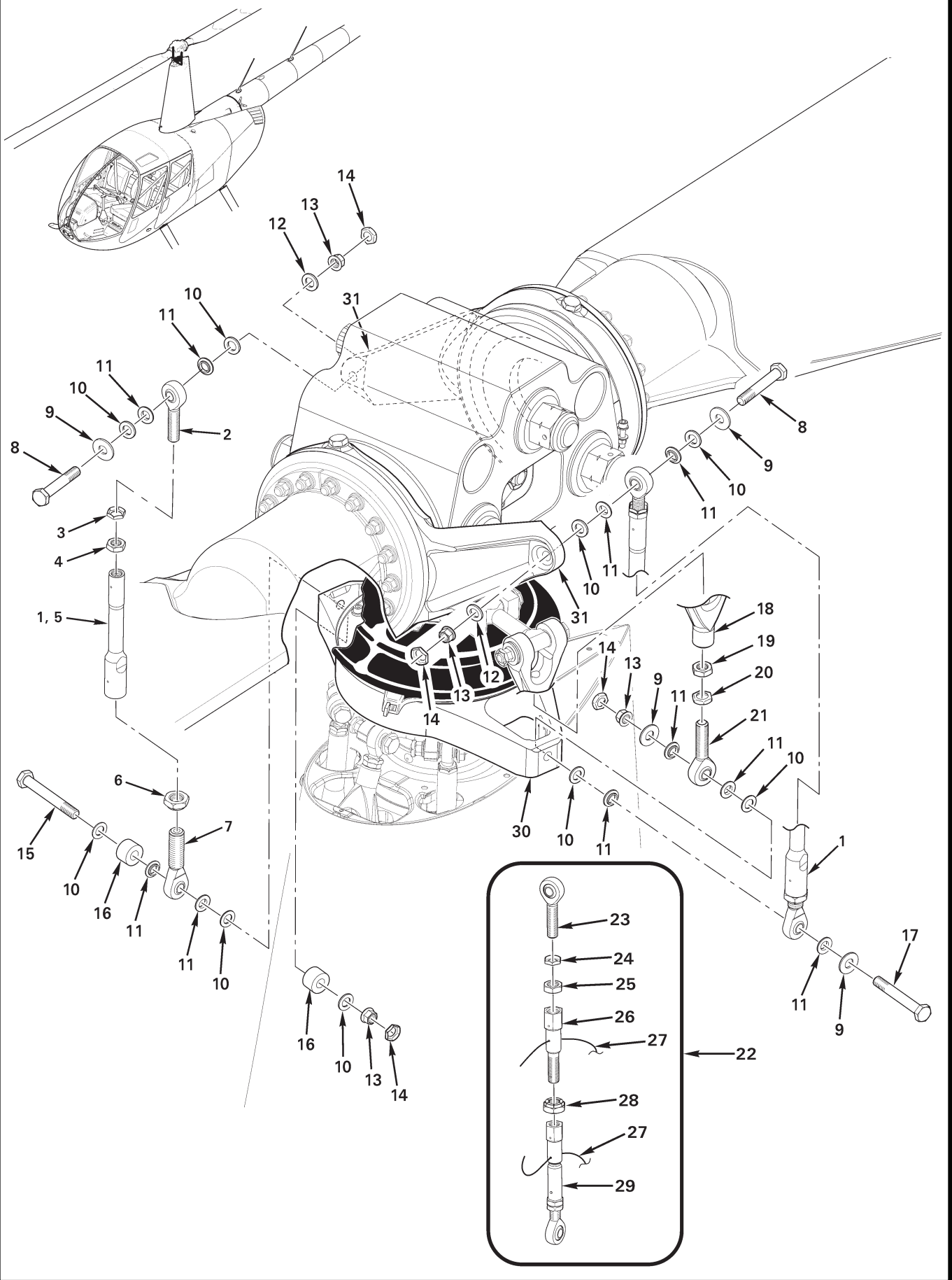
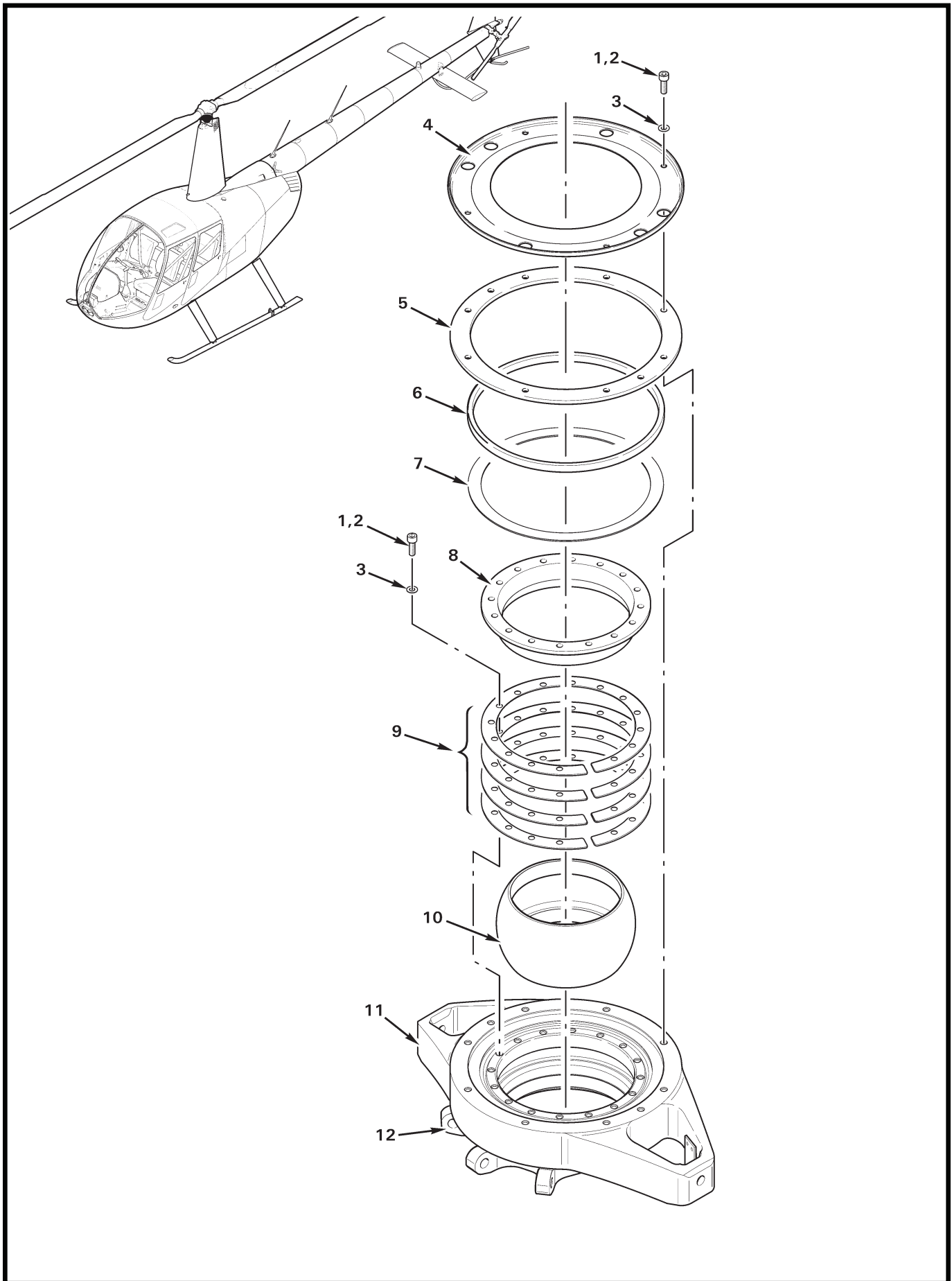


FIGURE AND INDEX NUMBER	PART NUMBER	DESCRIPTION	PARTS AVAIL	QTY PER ASSY
C258-1 & C258-5 PITCH LINK INSTALLATION*				
67-71-1	C258-5*	Pitch Link Assembly (Incl items 2 thru 7)	X	2
2	D173-3	Rod End	X	2
3	B330-19	Stamped Nut	X	2
4	AN316-6R	Nut	X	2
5	C258-6	Barrel Assembly	X	2
6	21FKF-813	Nut (alternate part no. 27FKF-813)	X	2
7	D173-4	Rod End	X	2
8	NAS6605-18	Bolt	X	2
9	C141-1	Washer	X	4
10	NAS1149F0532P	Washer	X	9
11	C115-1	Spacer	X	10
12	NAS1149F0563P	Washer	X	2
13	D210-5	Nut	X	4
14	B330-16	Stamped Nut	X	4
15	NAS6605-31	Bolt	X	1
16	A255-3	Counterweight	X	2
17	NAS6605-28	Bolt	X	1
18	A205-7	Fork Assembly (Ref; includes items 19 thru 21)	X	1
19	AN316-6R	Nut	X	1
20	B330-19	Stamped Nut	X	1
21	D173-3	Rod End	X	1
22	C258-1*	Pitch Link Assembly (Incl items 23 thru 26, 28 & 29)	O	2
23	D173-3	Rod End	X	2
24	B330-19	Stamped Nut	X	2
25	AN316-6R	Nut	X	2
26	C258-2	Fitting	X	2
27	MS20995C32	0.032 in. dia. safety wire	X	A/R
28	21FKF-813	Nut (alternate part no. 27FKF-813)	X	2
29	C258-4	Link Assembly	X	2
30	C017-6	Swashplate Assembly (Ref)		
	C017-4	Swashplate Assembly (Ref)		
31	C157-3	Pitch Horn (Ref)		
NOTES	* C258-1 & -5 Pitch Link Assemblies may be installed singly or in pairs; refer to R44 Service Letter SL-58. When no longer available, replace both with (2) C258-8 Pitch Link Assemblies per Figure 67-70C.			



REVISION LOG

JUN 2026

The R44 Illustrated Parts Catalog (IPC) list of effective pages and effective dates are given below. If a previously issued page is not listed below, it is no longer an effective page and must be discarded. The issue or revision date is in bold at the top of each revision log page.

Please visit <https://robinsonheli.com> to verify the issue or revision date is current.

<u>Page</u>	<u>Date</u>	<u>Page</u>	<u>Date</u>	<u>Page</u>	<u>Date</u>
i	JUN 2026	6.7	JAN 2014	6.38	APR 2016
ii	JUN 2026	6.8	JAN 2014		
iii	DEC 2021	6.9	JAN 2014	8.i	FEB 2024
iv	DEC 2021	6.10	JAN 2014	8.0	FEB 2024
v	DEC 2021	6.11	JAN 2014	8.1	FEB 2024
vi	DEC 2021	6.12	JAN 2014	8.2	FEB 2024
vii	DEC 2021	6.13	FEB 2020	8.3	FEB 2024
viii	DEC 2021	6.14	FEB 2020	8.4	FEB 2024
ix	JUN 2026	6.15	APR 2016		
x	JUN 2026	6.16	APR 2016	9.i	JAN 2014
xi	DEC 2021	6.17	APR 2016	9.0	JAN 2014
xii	DEC 2021	6.18	APR 2016	9.1	FEB 2020
xiii	DEC 2021	6.19	FEB 2020	9.2	FEB 2020
xiv	DEC 2021	6.20	FEB 2020	9.3	JAN 2014
xv	DEC 2021	6.21	JAN 2014	9.4	JAN 2014
xvi	DEC 2021	6.22	JAN 2014	9.5	JAN 2014
xvii	DEC 2021	6.23	JAN 2014	9.6	JAN 2014
xviii	DEC 2021	6.24	JAN 2014	9.7	JAN 2014
xix	DEC 2021	6.25	JAN 2014	9.8	JAN 2014
xx	DEC 2021	6.26	JAN 2014	9.9	JAN 2014
xxi	DEC 2021	6.27	FEB 2020	9.10	JAN 2014
xxii	DEC 2021	6.28	FEB 2020	9.11	JAN 2014
		6.29	APR 2016	9.12	JAN 2014
6.i	APR 2016	6.30	APR 2016		
6.0	APR 2016	6.31	APR 2016	10.i	JAN 2014
6.1	JAN 2014	6.32	APR 2016	10.0	JAN 2014
6.2	JAN 2014	6.33	APR 2016	10.1	JAN 2014
6.3	JAN 2014	6.34	APR 2016	10.2	JAN 2014
6.4	JAN 2014	6.35	APR 2016	10.3	JAN 2014
6.5	JAN 2014	6.36	APR 2016	10.4	JAN 2014
6.6	JAN 2014	6.37	APR 2016	10.5	JAN 2014

REVISION LOG

JUN 2026

<u>Page</u>	<u>Date</u>	<u>Page</u>	<u>Date</u>	<u>Page</u>	<u>Date</u>
10.6	JAN 2014	21.2	FEB 2020	21.38	JAN 2014
10.7	FEB 2020	21.3	FEB 2020	21.39	JAN 2014
10.8	FEB 2020	21.4	FEB 2020	21.40	JAN 2014
10.9	FEB 2020	21.5	FEB 2020	21.41	JAN 2014
10.10	FEB 2020	21.6	FEB 2020	21.42	JAN 2014
		21.7	JAN 2014		
11.i	FEB 2020	21.8	JAN 2014	22.i	APR 2016
11.0	FEB 2020	21.9	FEB 2020	22.0	APR 2016
11.1	FEB 2020	21.10	FEB 2020	22.1	APR 2016
11.2	FEB 2020	21.11	FEB 2020	22.2	APR 2016
11.3	DEC 2021	21.12	FEB 2020	22.3	APR 2016
11.4	DEC 2021	21.13	FEB 2020	22.4	APR 2016
11.5	FEB 2020	21.14	FEB 2020	22.5	APR 2016
11.6	FEB 2020	21.15	FEB 2020	22.6	APR 2016
11.7	FEB 2020	21.16	FEB 2020	22.7	APR 2016
11.8	FEB 2020	21.17	JAN 2014	22.8	APR 2016
11.9	FEB 2020	21.18	JAN 2014		
11.10	FEB 2020	21.19	JAN 2014	25.i	JUN 2026
		21.20	JAN 2014	25.0	JUN 2026
12.i	JAN 2014	21.21	JAN 2014	25.1	DEC 2021
12.0	JAN 2014	21.22	JAN 2014	25.2	DEC 2021
12.1	APR 2016	21.23	JAN 2014	25.3	FEB 2020
12.2	APR 2016	21.24	JAN 2014	25.4	FEB 2020
		21.25	FEB 2020	25.5	FEB 2020
18.i	JAN 2014	21.26	FEB 2020	25.6	FEB 2020
18.0	JAN 2014	21.27	FEB 2020	25.7	DEC 2021
18.1	JAN 2014	21.28	FEB 2020	25.8	DEC 2021
18.2	JAN 2014	21.29	FEB 2020	25.9	DEC 2021
18.3	JAN 2014	21.30	FEB 2020	25.10	DEC 2021
18.4	JAN 2014	21.31	JAN 2014	25.11	DEC 2021
18.5	JAN 2014	21.32	JAN 2014	25.12	DEC 2021
18.6	JAN 2014	21.33	JAN 2014	25.13	DEC 2021
		21.34	JAN 2014	25.14	DEC 2021
21.i	FEB 2020	21.35	JAN 2014	25.15	DEC 2021
21.0	FEB 2020	21.36	JAN 2014	25.16	DEC 2021
21.1	FEB 2020	21.37	JAN 2014	25.17	DEC 2021

REVISION LOG

JUN 2026

<u>Page</u>	<u>Date</u>	<u>Page</u>	<u>Date</u>	<u>Page</u>	<u>Date</u>
25.18	DEC 2021	25.50	DEC 2021	28.33	DEC 2021
25.19	DEC 2021			28.34	DEC 2021
25.20	DEC 2021	28.i	DEC 2021	28.35	DEC 2021
25.21	DEC 2021	28.0	DEC 2021	28.36	DEC 2021
25.22	DEC 2021	28.1	DEC 2021	28.37	DEC 2021
25.23	DEC 2021	28.2	DEC 2021	28.38	DEC 2021
25.24	DEC 2021	28.3	DEC 2021	28.39	FEB 2020
25.25	DEC 2021	28.4	DEC 2021	28.40	FEB 2020
25.26	DEC 2021	28.5	DEC 2021	28.41	FEB 2020
25.27	DEC 2021	28.6	DEC 2021	28.42	FEB 2020
25.28	DEC 2021	28.7	FEB 2020		
25.29	DEC 2021	28.8	FEB 2020	29.i	FEB 2025
25.30	DEC 2021	28.9	FEB 2020	29.0	FEB 2025
25.31	DEC 2021	28.10	FEB 2020	29.1	FEB 2025
25.32	DEC 2021	28.11	FEB 2020	29.2	FEB 2025
25.33	FEB 2025	28.12	FEB 2020	29.3	FEB 2025
25.34	FEB 2025	28.13	FEB 2020	29.4	FEB 2025
25.35	JUN 2026	28.14	FEB 2020	29.5	JAN 2014
25.35A	JUN 2026	28.15	DEC 2021	29.6	JAN 2014
25.35B	JUN 2026	28.16	DEC 2021	29.7	JAN 2014
25.36	JUN 2026	28.17	DEC 2021	29.8	JAN 2014
25.37	JUN 2026	28.18	DEC 2021	29.9	JAN 2014
25.38	JUN 2026	28.19	DEC 2021	29.10	JAN 2014
25.39	JUN 2026	28.20	DEC 2021	29.11	JAN 2014
25.40	JUN 2026	28.21	FEB 2020	29.12	JAN 2014
25.41	JUN 2026	28.22	FEB 2020	29.13	FEB 2025
25.41A	JUN 2026	28.23	FEB 2020	29.14	FEB 2025
25.41B	DEC 2021	28.24	FEB 2020	29.15	APR 2016
25.42	DEC 2021	28.25	FEB 2020	29.16	APR 2016
25.43	DEC 2021	28.26	FEB 2020	29.17	APR 2016
25.44	DEC 2021	28.27	FEB 2020	29.18	APR 2016
25.45	DEC 2021	28.28	FEB 2020		
25.46	DEC 2021	28.29	FEB 2020	32.i	JUN 2026
25.47	DEC 2021	28.30	FEB 2020	32.0	JUN 2026
25.48	DEC 2021	28.31	DEC 2021	32.1	APR 2016
25.49	DEC 2021	28.32	DEC 2021	32.2	APR 2016

REVISION LOG

JUN 2026

<u>Page</u>	<u>Date</u>	<u>Page</u>	<u>Date</u>	<u>Page</u>	<u>Date</u>
32.3	APR 2016	32.37	JUN 2026	52.7	FEB 2024
32.4	APR 2016	32.38	JUN 2026	52.8	FEB 2024
32.5	APR 2016	32.39	JUN 2026	52.9	FEB 2024
32.6	APR 2016	32.40	JUN 2026	52.10	FEB 2024
32.7	APR 2016			52.11	FEB 2024
32.8	APR 2016	33.i	APR 2016	52.12	FEB 2024
32.9	FEB 2024	33.0	APR 2016	52.13	FEB 2024
32.10	FEB 2024	33.1	FEB 2020	52.14	FEB 2024
32.11	FEB 2024	33.2	FEB 2020	52.15	FEB 2024
32.11A	FEB 2024	33.3	FEB 2020	52.16	FEB 2024
32.11B	FEB 2025	33.4	FEB 2020	52.17	FEB 2024
32.12	FEB 2025	33.5	FEB 2024	52.18	FEB 2024
32.13	FEB 2025	33.6	FEB 2024	52.19	FEB 2024
32.14	FEB 2025	33.7	FEB 2024	52.20	FEB 2024
32.15	APR 2016	33.8	FEB 2024	52.21	FEB 2024
32.16	APR 2016	33.9	DEC 2021	52.22	FEB 2024
32.17	APR 2016	33.10	DEC 2021		
32.18	APR 2016	33.11	DEC 2021	53.i	FEB 2024
32.19	APR 2016	33.12	DEC 2021	53.0	FEB 2024
32.20	APR 2016	33.13	DEC 2021	53.1	APR 2016
32.21	APR 2016	33.14	DEC 2021	53.2	APR 2016
32.22	APR 2016	33.15	FEB 2020	53.3	APR 2016
32.23	APR 2016	33.16	FEB 2020	53.4	APR 2016
32.24	APR 2016	33.17	FEB 2020	53.5	APR 2016
32.25	FEB 2025	33.18	FEB 2020	53.6	APR 2016
32.26	FEB 2025	33.19	FEB 2020	53.7	APR 2016
32.27	FEB 2025	33.20	FEB 2020	53.8	APR 2016
32.28	FEB 2025			53.9	APR 2016
32.29	APR 2016	52.i	FEB 2024	53.10	APR 2016
32.30	APR 2016	52.0	FEB 2024	53.11	APR 2016
32.31	APR 2016	52.1	DEC 2021	53.12	APR 2016
32.32	APR 2016	52.2	DEC 2021	53.13	APR 2016
32.33	APR 2016	52.3	DEC 2021	53.14	APR 2016
32.34	APR 2016	52.4	DEC 2021	53.15	APR 2016
32.35	JUN 2026	52.5	FEB 2024	53.16	APR 2016
32.36	JUN 2026	52.6	FEB 2024	53.17	APR 2016

REVISION LOG

JUN 2026

<u>Page</u>	<u>Date</u>	<u>Page</u>	<u>Date</u>	<u>Page</u>	<u>Date</u>
53.18	APR 2016	62.i	APR 2016	63.24	APR 2016
53.19	FEB 2020	62.0	APR 2016		
53.20	FEB 2020	62.1	APR 2016	64.i	APR 2016
53.21	APR 2016	62.2	APR 2016	64.0	APR 2016
53.22	APR 2016	62.3	FEB 2020	64.1	APR 2016
53.23	FEB 2024	62.4	FEB 2020	64.2	APR 2016
53.24	FEB 2024	62.5	APR 2016	64.3	JAN 2014
53.25	FEB 2024	62.6	APR 2016	64.4	JAN 2014
53.26	FEB 2024	62.7	FEB 2020	64.5	FEB 2020
53.27	FEB 2024	62.8	FEB 2020	64.6	FEB 2020
53.28	FEB 2024			64.7	JAN 2014
53.29	APR 2016	63.i	APR 2016	64.8	JAN 2014
53.30	APR 2016	63.0	APR 2016	64.9	FEB 2020
53.31	APR 2016	63.1	FEB 2025	64.10	FEB 2020
53.32	APR 2016	63.2	FEB 2025		
53.33	APR 2016	63.3	FEB 2025	65.i	JAN 2014
53.34	APR 2016	63.4	FEB 2025	65.0	JAN 2014
53.35	FEB 2024	63.5	APR 2016	65.1	FEB 2020
53.36	FEB 2024	63.6	APR 2016	65.2	FEB 2020
53.37	FEB 2025	63.7	APR 2016	65.3	JAN 2014
53.38	FEB 2025	63.8	APR 2016	65.4	JAN 2014
53.39	FEB 2024	63.9	JAN 2014	65.5	DEC 2021
53.40	FEB 2024	63.10	JAN 2014	65.6	DEC 2021
53.41	FEB 2025	63.11	JAN 2014	65.7	DEC 2021
53.42	FEB 2025	63.12	JAN 2014	65.8	DEC 2021
53.43	FEB 2024	63.13	FEB 2025	65.9	JAN 2014
53.44	FEB 2024	63.14	FEB 2025	65.10	JAN 2014
53.45	FEB 2024	63.15	FEB 2025	65.11	FEB 2025
53.46	FEB 2024	63.16	FEB 2025	65.12	FEB 2025
53.47	FEB 2024	63.17	FEB 2024		
53.48	FEB 2024	63.18	FEB 2024	67.i	JUN 2026
53.49	FEB 2024	63.19	FEB 2024	67.0	JUN 2026
53.50	FEB 2024	63.20	FEB 2024	67.1	JUN 2026
53.51	FEB 2024	63.21	FEB 2024	67.2	JUN 2026
53.52	FEB 2024	63.22	FEB 2024	67.3	JUN 2026
		63.23	APR 2016	67.4	JUN 2026

REVISION LOG

JUN 2026

<u>Page</u>	<u>Date</u>	<u>Page</u>	<u>Date</u>	<u>Page</u>	<u>Date</u>
67.5	JUN 2026	67.37	JAN 2014	67.70C	JUN 2026
67.6	JUN 2026	67.38	JAN 2014	67.70D	JUN 2026
67.7	JUN 2026	67.39	JAN 2014	67.71	JUN 2026
67.8	JUN 2026	67.40	JAN 2014	67.72	JUN 2026
67.9	APR 2016	67.41	FEB 2020	67.73	JAN 2014
67.10	APR 2016	67.42	FEB 2020	67.74	JAN 2014
67.11	JAN 2014	67.43	JAN 2014	67.75	JAN 2014
67.12	JAN 2014	67.44	JAN 2014	67.76	JAN 2014
67.13	JAN 2014	67.45	FEB 2020	67.77	FEB 2020
67.14	JAN 2014	67.46	FEB 2020	67.78	FEB 2020
67.15	JUN 2014	67.47	JAN 2014	67.79	JAN 2014
67.15A	JUN 2014	67.48	JAN 2014	67.80	JAN 2014
67.15B	FEB 2020	67.49	FEB 2025	67.81	FEB 2020
67.15C	FEB 2020	67.50	FEB 2025	67.82	FEB 2020
67.15D	JUN 2014	67.51	FEB 2025	67.83	JAN 2014
67.16	JUN 2014	67.52	FEB 2025	67.84	JAN 2014
67.17	FEB 2020	67.53	FEB 2020	67.85	FEB 2020
67.18	FEB 2020	67.54	FEB 2020	67.86	FEB 2020
67.19	APR 2016	67.55	FEB 2020	67.87	JAN 2014
67.20	APR 2016	67.56	FEB 2020	67.88	JAN 2014
67.21	FEB 2024	67.57	FEB 2020	67.89	FEB 2020
67.22	FEB 2024	67.58	FEB 2020	67.90	FEB 2020
67.23	FEB 2024	67.59	JUN 2026	67.91	FEB 2020
67.24	FEB 2024	67.60	JUN 2026	67.92	FEB 2020
67.25	JAN 2014	67.61	JUN 2026		
67.26	JAN 2014	67.62	JUN 2026	71.i	FEB 2025
67.27	FEB 2020	67.63	JUN 2026	71.0	FEB 2025
67.28	FEB 2020	67.64	JUN 2026	71.1	FEB 2025
67.29	JAN 2014	67.65	JUN 2026	71.2	FEB 2025
67.30	JAN 2014	67.66	JUN 2026	71.2A	FEB 2025
67.31	FEB 2020	67.67	JAN 2014	71.2B	FEB 2025
67.32	FEB 2020	67.68	JAN 2014	71.3	FEB 2025
67.33	JAN 2014	67.69	FEB 2020	71.4	FEB 2025
67.34	JAN 2014	67.70	FEB 2020	71.5	FEB 2020
67.35	FEB 2020	67.70A	JUN 2026	71.6	FEB 2020
67.36	FEB 2020	67.70B	JUN 2026	71.7	FEB 2020

REVISION LOG

JUN 2026

<u>Page</u>	<u>Date</u>	<u>Page</u>	<u>Date</u>	<u>Page</u>	<u>Date</u>
71.8	FEB 2020	71.40	JAN 2014	76.3	MAY 2016
71.9	FEB 2020	71.41	JAN 2014	76.4	MAY 2016
71.10	FEB 2020	71.42	JAN 2014	76.5	MAY 2016
71.11	FEB 2025	71.43	JAN 2014	76.6	MAY 2016
71.11A	FEB 2025	71.44	JAN 2014	76.7	APR 2016
71.11B	FEB 2025	71.45	JAN 2014	76.8	APR 2016
71.12	FEB 2025	71.46	JAN 2014	76.9	FEB 2020
71.13	APR 2016	71.47	JAN 2014	76.10	FEB 2020
71.14	APR 2016	71.48	JAN 2014	76.11	JAN 2014
71.15	JAN 2014	71.49	DEC 2021	76.12	JAN 2014
71.16	JAN 2014	71.49A	DEC 2021	76.13	JAN 2014
71.17	JAN 2014	71.49B	DEC 2021	76.14	JAN 2014
71.18	JAN 2014	71.49C	DEC 2021	76.15	JAN 2014
71.19	APR 2016	71.49D	DEC 2021	76.16	JAN 2014
71.20	APR 2016	71.50	DEC 2021	76.17	FEB 2020
71.21	FEB 2024	71.51	JAN 2014	76.18	FEB 2020
71.22	FEB 2024	71.52	JAN 2014		
71.23	APR 2016	71.53	JAN 2014	79.i	APR 2016
71.24	APR 2016	71.54	JAN 2014	79.0	APR 2016
71.25	FEB 2025	71.55	JAN 2014	79.1	APR 2016
71.26	FEB 2025	71.56	JAN 2014	79.2	APR 2016
71.27	FEB 2025	71.57	FEB 2020	79.3	APR 2016
71.27A	FEB 2025	71.58	FEB 2020	79.4	APR 2016
71.27B	FEB 2025	71.59	FEB 2020	79.5	DEC 2021
71.28	FEB 2025	71.60	FEB 2020	79.6	DEC 2021
71.29	FEB 2025	71.61	JAN 2014	79.7	DEC 2021
71.30	FEB 2025	71.62	JAN 2014	79.8	DEC 2021
71.31	JAN 2014	71.63	APR 2016	79.9	DEC 2021
71.32	JAN 2014	71.64	APR 2016	79.10	DEC 2021
71.33	JAN 2014	71.65	APR 2016	79.11	DEC 2021
71.34	JAN 2014	71.66	APR 2016	79.12	DEC 2021
71.35	JAN 2014				
71.36	JAN 2014	76.i	JUN 2014	90.i	JAN 2014
71.37	JAN 2014	76.0	JUN 2014	90.0	JAN 2014
71.38	JAN 2014	76.1	FEB 2020	90.1	JAN 2014
71.39	JAN 2014	76.2	FEB 2020	90.2	JAN 2014

REVISION LOG

JUN 2026

<u>Page</u>	<u>Date</u>	<u>Page</u>	<u>Date</u>	<u>Page</u>	<u>Date</u>
90.3	JAN 2014	92.6	JAN 2014	92.38	FEB 2020
90.4	JAN 2014	92.7	JAN 2014		
90.5	JAN 2014	92.8	JAN 2014	94.i	DEC 2021
90.6	JAN 2014	92.9	JAN 2014	94.0	DEC 2021
90.7	JAN 2014	92.10	JAN 2014	94.1	DEC 2021
90.8	JAN 2014	92.11	JAN 2014	94.2	DEC 2021
90.9	JAN 2014	92.12	JAN 2014	94.3	DEC 2021
90.10	JAN 2014	92.13	JAN 2014	94.4	DEC 2021
90.11	JAN 2014	92.14	JAN 2014		
90.12	JAN 2014	92.15	JAN 2014	95.i	FEB 2020
90.13	JAN 2014	92.16	JAN 2014	95.ii	FEB 2020
90.14	JAN 2014	92.17	FEB 2020	95.iii	FEB 2020
90.15	JAN 2014	92.17A	FEB 2020	95.0	FEB 2020
90.16	JAN 2014	92.17B	FEB 2020	95.1	FEB 2020
90.17	JAN 2014	92.17C	FEB 2020	95.2	FEB 2020
90.18	JAN 2014	92.17D	FEB 2020	95.3	FEB 2020
90.19	JAN 2014	92.18	FEB 2020	95.4	FEB 2020
90.20	JAN 2014	92.19	FEB 2020	95.5	FEB 2020
90.21	JAN 2014	92.20	FEB 2020	95.6	FEB 2020
90.22	JAN 2014	92.21	JAN 2014	95.7	FEB 2020
90.23	JAN 2014	92.22	JAN 2014	95.8	FEB 2020
90.24	JAN 2014	92.23	JAN 2014	95.9	FEB 2020
90.25	JAN 2014	92.24	JAN 2014	95.10	FEB 2020
90.26	JAN 2014	92.25	JAN 2014	95.11	FEB 2020
90.27	JAN 2014	92.26	JAN 2014	95.12	FEB 2020
90.28	JAN 2014	92.27	JAN 2014	95.13	FEB 2020
90.29	JAN 2014	92.28	JAN 2014	95.14	FEB 2020
90.30	JAN 2014	92.29	JAN 2014	95.15	FEB 2020
		92.30	JAN 2014	95.16	FEB 2020
92.i	FEB 2020	92.31	JAN 2014	95.17	FEB 2020
92.0	FEB 2020	92.32	JAN 2014	95.18	FEB 2020
92.1	JAN 2014	92.33	JAN 2014	95.19	FEB 2020
92.2	JAN 2014	92.34	JAN 2014	95.20	FEB 2020
92.3	JAN 2014	92.35	FEB 2020	95.21	FEB 2020
92.4	JAN 2014	92.36	FEB 2020	95.22	FEB 2020
92.5	JAN 2014	92.37	FEB 2020	95.23	FEB 2020

REVISION LOG

JUN 2026

<u>Page</u>	<u>Date</u>	<u>Page</u>	<u>Date</u>	<u>Page</u>	<u>Date</u>
95.24	FEB 2020	95.60	FEB 2020	96.7	JAN 2014
95.25	FEB 2020	95.61	FEB 2025	96.8	JAN 2014
95.26	FEB 2020	95.62	FEB 2025	96.9	JAN 2014
95.27	FEB 2020	95.63	FEB 2020	96.10	JAN 2014
95.28	FEB 2020	95.64	FEB 2020	96.11	DEC 2021
95.29	FEB 2020	95.65	FEB 2020	96.12	DEC 2021
95.30	FEB 2020	95.66	FEB 2020	96.12A	DEC 2021
95.31	FEB 2020	95.67	FEB 2020	96.12B	DEC 2021
95.32	FEB 2020	95.68	FEB 2020	96.12C	DEC 2021
95.33	FEB 2020	95.69	FEB 2020	96.13	DEC 2021
95.34	FEB 2020	95.70	FEB 2020	96.13A	DEC 2021
95.35	FEB 2020	95.71	FEB 2020	96.13B	DEC 2021
95.36	FEB 2020	95.72	FEB 2020	96.13C	DEC 2021
95.37	FEB 2020	95.73	FEB 2020	96.14	DEC 2021
95.38	FEB 2020	95.74	FEB 2020	96.15	DEC 2021
95.39	FEB 2020	95.75	FEB 2020	96.16	DEC 2021
95.40	FEB 2020	95.76	FEB 2020	96.17	JAN 2014
95.41	FEB 2020	95.77	FEB 2020	96.18	JAN 2014
95.42	FEB 2020	95.78	FEB 2020	96.19	JAN 2014
95.43	FEB 2020	95.79	FEB 2020	96.20	JAN 2014
95.44	FEB 2020	95.80	FEB 2020	96.21	JAN 2014
95.45	FEB 2020	95.81	FEB 2020	96.22	JAN 2014
95.46	FEB 2020	95.82	FEB 2020	96.23	JAN 2014
95.47	FEB 2020	95.83	FEB 2020	96.24	JAN 2014
95.48	FEB 2020	95.84	FEB 2020	96.25	JAN 2014
95.49	FEB 2020			96.26	JAN 2014
95.50	FEB 2020	96.i	FEB 2025	96.27	JAN 2014
95.51	FEB 2020	96.ii	FEB 2025	96.28	JAN 2014
95.52	FEB 2020	96.iii	JAN 2014	96.29	JAN 2014
95.53	FEB 2020	96.0	JAN 2014	96.30	JAN 2014
95.54	FEB 2020	96.1	JAN 2014	96.31	JAN 2014
95.55	FEB 2020	96.2	JAN 2014	96.32	JAN 2014
95.56	FEB 2020	96.3	JAN 2014	96.33	JAN 2014
95.57	FEB 2020	96.4	JAN 2014	96.34	JAN 2014
95.58	FEB 2020	96.5	JAN 2014	96.35	JAN 2014
95.59	FEB 2020	96.6	JAN 2014	96.36	JAN 2014

REVISION LOG

JUN 2026

<u>Page</u>	<u>Date</u>	<u>Page</u>	<u>Date</u>	<u>Page</u>	<u>Date</u>
96.37	JAN 2014	96.69	JAN 2014	97.16	FEB 2020
96.38	JAN 2014	96.70	JAN 2014	97.17	FEB 2020
96.39	JAN 2014	96.71	JAN 2014	97.18	FEB 2020
96.40	JAN 2014	96.72	JAN 2014	97.19	FEB 2020
96.41	JAN 2014	96.73	JAN 2014	97.20	FEB 2020
96.42	JAN 2014	96.74	JAN 2014	97.21	FEB 2020
96.43	FEB 2020	96.75	JAN 2014	97.22	FEB 2020
96.44	FEB 2020	96.76	JAN 2014	97.23	FEB 2020
96.45	JAN 2014	96.77	JAN 2014	97.23A	FEB 2020
96.46	JAN 2014	96.78	JAN 2014	97.23B	FEB 2020
96.47	FEB 2020	96.79	FEB 2025	97.24	FEB 2020
96.48	FEB 2020	96.80	FEB 2025	97.25	FEB 2020
96.49	FEB 2020	96.81	FEB 2025	97.26	FEB 2020
96.50	FEB 2020	96.81A	FEB 2025	97.27	FEB 2020
96.51	FEB 2020	96.81B	FEB 2025	97.28	FEB 2020
96.52	FEB 2020	96.82	FEB 2025	97.29	FEB 2020
96.53	FEB 2020	96.83	FEB 2025	97.30	FEB 2020
96.54	FEB 2020	96.84	FEB 2025	97.31	FEB 2020
96.55	JAN 2014			97.32	FEB 2020
96.56	JAN 2014	97.i	FEB 2020	97.33	FEB 2020
96.57	JAN 2014	97.0	FEB 2020	97.34	FEB 2020
96.58	JAN 2014	97.1	FEB 2020	97.35	FEB 2020
96.59	JAN 2014	97.2	FEB 2020	97.36	FEB 2020
96.60	JAN 2014	97.3	FEB 2020	97.37	FEB 2020
96.61	JAN 2014	97.4	FEB 2020	97.38	FEB 2020
96.62	JAN 2014	97.5	FEB 2020	97.39	FEB 2020
96.63	FEB 2024	97.6	FEB 2020	97.40	FEB 2020
96.63A	FEB 2024	97.7	FEB 2020	97.41	FEB 2020
96.63B	FEB 2020	97.8	FEB 2020	97.42	FEB 2020
96.63C	FEB 2020	97.9	FEB 2020	97.43	FEB 2020
96.63D	FEB 2020	97.10	FEB 2020	97.44	FEB 2020
96.64	FEB 2020	97.11	FEB 2020	97.45	FEB 2020
96.65	JAN 2014	97.12	FEB 2020	97.46	FEB 2020
96.66	JAN 2014	97.13	FEB 2020	97.47	FEB 2020
96.67	JAN 2014	97.14	FEB 2020	97.48	FEB 2020
96.68	JAN 2014	97.15	FEB 2020	97.49	FEB 2020

REVISION LOG**JUN 2026**

<u>Page</u>	<u>Date</u>	<u>Page</u>	<u>Date</u>	<u>Page</u>	<u>Date</u>
97.50	FEB 2020	100.0	DEC 2021		
97.51	FEB 2020	100.1	JUN 2026		
97.52	FEB 2020	100.2	JUN 2026		
97.53	FEB 2020	100.3	JUN 2026		
97.54	FEB 2020	100.4	JUN 2026		
97.55	FEB 2020	100.5	JUN 2026		
97.56	FEB 2020	100.6	JUN 2026		
97.57	FEB 2020	100.7	JUN 2026		
97.58	FEB 2020	100.8	JUN 2026		
97.59	FEB 2020	100.9	JUN 2026		
97.60	FEB 2020	100.10	JUN 2026		
97.61	FEB 2020	100.11	JUN 2026		
97.62	FEB 2020	100.12	JUN 2026		
99.i	FEB 2020				
99.0	FEB 2020				
99.1	FEB 2020				
99.2	FEB 2020				
99.3	FEB 2020				
99.4	FEB 2020				
99.5	FEB 2020				
99.6	FEB 2020				
99.7	FEB 2020				
99.8	FEB 2020				
99.9	FEB 2020				
99.10	FEB 2020				
99.11	FEB 2020				
99.12	FEB 2020				
99.13	FEB 2020				
99.14	FEB 2020				
99.15	FEB 2020				
99.16	FEB 2020				
99.17	FEB 2020				
99.18	FEB 2020				
100.i	DEC 2021				

Intentionally Blank